

# **Asset Management Migration Guide**

## **ZENworks® 11 Support Pack 2**

March 20, 2012

## Legal Notices

Novell, Inc., makes no representations or warranties with respect to the contents or use of this documentation, and specifically disclaims any express or implied warranties of merchantability or fitness for any particular purpose. Further, Novell, Inc., reserves the right to revise this publication and to make changes to its content, at any time, without obligation to notify any person or entity of such revisions or changes.

Further, Novell, Inc., makes no representations or warranties with respect to any software, and specifically disclaims any express or implied warranties of merchantability or fitness for any particular purpose. Further, Novell, Inc., reserves the right to make changes to any and all parts of Novell software, at any time, without any obligation to notify any person or entity of such changes.

Any products or technical information provided under this Agreement may be subject to U.S. export controls and the trade laws of other countries. You agree to comply with all export control regulations and to obtain any required licenses or classification to export, re-export or import deliverables. You agree not to export or re-export to entities on the current U.S. export exclusion lists or to any embargoed or terrorist countries as specified in the U.S. export laws. You agree to not use deliverables for prohibited nuclear, missile, or chemical biological weaponry end uses. See the [Novell International Trade Services Web page \(http://www.novell.com/info/exports/\)](http://www.novell.com/info/exports/) for more information on exporting Novell software. Novell assumes no responsibility for your failure to obtain any necessary export approvals.

Copyright © 2007–2012 Novell, Inc. All rights reserved. No part of this publication may be reproduced, photocopied, stored on a retrieval system, or transmitted without the express written consent of the publisher.

Novell, Inc.  
1800 South Novell Place  
Provo, UT 84606  
U.S.A.  
[www.novell.com](http://www.novell.com)

*Online Documentation:* To access the latest online documentation for this and other Novell products, see the [Novell Documentation Web page \(http://www.novell.com/documentation/zenworks11/\)](http://www.novell.com/documentation/zenworks11/).

## Novell Trademarks

For Novell trademarks, see [the Novell Trademark and Service Mark list \(http://www.novell.com/company/legal/trademarks/tmlist.html\)](http://www.novell.com/company/legal/trademarks/tmlist.html).

## Third-Party Materials

All third-party trademarks are the property of their respective owners.

---

# Contents

<b>About This Guide</b>	<b>5</b>
<b>1 Using the Migration Utility</b>	<b>7</b>
1.1 Before You Begin	7
1.2 Overview	8
1.2.1 System Requirements	9
1.2.2 The Migration Process	10
1.3 Downloading and Installing the ZENworks Migration Utility	11
1.4 Selecting the Migration Source	11
1.5 Selecting the Migration Destination	13
1.6 Migrating Objects	15
1.6.1 Migrating Inventory Data	15
1.6.2 Migrating Administrator-Defined Field Definitions	17
1.6.3 Migrating Local Product Definitions	18
1.6.4 Migrating Asset Management Data	19
1.6.5 Migrating Asset Management Data Only	20
1.6.6 Migrating License Records	22
1.6.7 Migrating Custom Reports	22
1.6.8 Migration Performance Guidelines	25
<b>2 Migration Console Reference</b>	<b>27</b>
2.1 Menu Options	28
2.2 Select Objects to Migrate Tab	29
2.3 Items to Migrate Tab	30
2.4 Migration Status Tab	30
2.5 Migration History Tab	30
2.6 Migrated Objects Tab	30
2.7 Select ZAM Database Field	31
2.8 Select Zone Field	32
2.9 Start Migration Button	33
2.10 Cancel Button	33
2.11 Migration Queue Progress	33
2.12 Migration Task Progress	34
<b>A Migrating Both ZENworks 7 Desktop Management and ZENworks 7.5 Asset Management</b>	<b>35</b>
A.1 Migration Order	35
A.2 ZAM Migration Utility Messages	36
<b>B ZENworks Objects and Their Uniqueness</b>	<b>39</b>
B.1 Duplicate Object Details	39
B.1.1 Purchase Records	40
B.1.2 Catalog Products	40
B.1.3 Licensed Products	40
B.1.4 Discovered Products	40
B.1.5 Software Collections	40

B.1.6	Contracts .....	40
B.1.7	Date Notifications.....	40
B.1.8	Documents.....	41

<b>Glossary</b>		<b>43</b>
-----------------	--	-----------

---

# About This Guide

This Novell ZENworks 11 SP2 Asset Management Migration Guide includes information to help you successfully migrate selected inventory and asset management data from ZENworks Asset Management 7.5 to an installed Novell ZENworks 11 SP2 Asset Management system

The information in this guide is organized as follows:

- ♦ [Chapter 1, “Using the Migration Utility,” on page 7](#)
- ♦ [Chapter 2, “Migration Console Reference,” on page 27](#)
- ♦ [Appendix B, “ZENworks Objects and Their Uniqueness,” on page 39](#)
- ♦ [“Glossary” on page 43](#)

## Audience

This guide is intended for ZENworks administrators.

## Feedback

We want to hear your comments and suggestions about this manual and the other documentation included with this product. Please use the User Comments feature at the bottom of each page of the online documentation.

## Additional Documentation

ZENworks 11 SP2 Asset Management is supported by other documentation (in both PDF and HTML formats) that you can use to learn about and implement the product. For additional documentation, see the [ZENworks 11 SP2 documentation Web site \(http://www.novell.com/documentation/zenworks11/\)](http://www.novell.com/documentation/zenworks11/).



---

# 1 Using the Migration Utility

The following sections provide instructions on how to use the Novell ZENworks 11 SP2 Asset Management Migration utility to migrate data from ZENworks Asset Management 7.5:

- ♦ [Section 1.1, “Before You Begin,” on page 7](#)
- ♦ [Section 1.2, “Overview,” on page 8](#)
- ♦ [Section 1.3, “Downloading and Installing the ZENworks Migration Utility,” on page 11](#)
- ♦ [Section 1.4, “Selecting the Migration Source,” on page 11](#)
- ♦ [Section 1.5, “Selecting the Migration Destination,” on page 13](#)
- ♦ [Section 1.6, “Migrating Objects,” on page 15](#)

## 1.1 Before You Begin

Before you begin migrating data from ZENworks Asset Management 7.5 to ZENworks 11 SP2 Asset Management, consider the following:

- ♦ If you also have ZENworks 7 Desktop Management installed on your ZENworks Asset Management 7.5 workstations, see [Appendix A, “Migrating Both ZENworks 7 Desktop Management and ZENworks 7.5 Asset Management,” on page 35](#) to ensure that you migrate the two products in the correct order.
- ♦ You should back up both source and destination databases.
- ♦ Turn off the inventory process on ZENworks Asset Management 7.5 before you run the migration utility.
- ♦ If you have migrated inventory data with a previous version of the migration utility, you must use that same version to migrate the asset management data.
- ♦ The version of the migration utility that you use must match the ZENworks Management Zone version. The migration utility will not connect to a zone that does not match its version number.
- ♦ You can only migrate objects once.
- ♦ Network devices are not migrated.
- ♦ You need to migrate inventory data before asset management data. If you want to do a staged migration, do not migrate asset management data until all staging is complete. For more information about staging, see [“Staging a Migration” on page 16](#).
- ♦ Not all custom reports are migrated. For a list of custom reports that are not migrated, see [Section 1.6.7, “Migrating Custom Reports,” on page 22](#).
- ♦ When migrating to a SQL server, note the following file size recommendations:
  - ♦ The destination data file should be at least 1.1 times the size of the source data file.
  - ♦ The destination log file should be at least 1.2 times the size of the source data file.

- ◆ If you are migrating data installation that already contains some of the same asset management data, you might see migration errors or fail in the migration process. See [“ZENworks Objects and Their Uniqueness” on page 39](#) for more information.
- ◆ For better migration performance, it is strongly recommended that you purge the ZENworks Asset Management 7.5 database before you begin. For details, see [Section 1.6.8, “Migration Performance Guidelines,” on page 25](#).

## 1.2 Overview

The migration utility is used to migrate inventory data, which is defined by your ZENworks Asset Management 7.5 collection domains, and asset management data. This data includes the following:

- ◆ Inventory data
  - ◆ Devices (including deleted devices, if desired. See [Section 1.6.1, “Migrating Inventory Data,” on page 15](#))
  - ◆ Device history
  - ◆ Local software products
  - ◆ Hardware/software components
  - ◆ Administrator-defined fields (known as *user*-defined fields in ZENworks Asset Management 7.5)
  - ◆ Custom reports
- ◆ Asset management data
  - ◆ Asset management usage data
  - ◆ Asset management custom reports
  - ◆ Asset management administrator-defined fields (known as *user*-defined fields in ZENworks Asset Management 7.5)
  - ◆ Catalog products
  - ◆ Discovered products
  - ◆ Purchase records
  - ◆ Licensed products
  - ◆ Software collections
  - ◆ Contracts and date notifications
  - ◆ Documents

Network devices and contract-network relationships are not migrated. Contract-to-network-device relationships can be reestablished after a network discovery process is run within ZENworks 11 SP2 Asset Management.

Inventory data can be migrated by individual device or as a group. Asset management data is migrated as a group.

When you migrate inventory data, by default you are also migrating the following:

- ◆ **Local Product Definitions:** Local product definitions defined in ZENworks Asset Management 7.5. These product definitions are migrated as a group; they cannot be migrated individually. If you want to migrate just the local product definitions without the inventory data, see [“Migrating Local Product Definitions” on page 18](#).



- ♦ **Administrator-Defined Field Definitions:** Asset management and inventory administrator-defined fields defined in ZENworks Asset Management 7.5 (Administrator-defined fields are known as *user*-defined fields ZENworks Asset Management 7.5). These field definitions are migrated as a group; they cannot be migrated individually. If you want to migrate just the administrator-defined field definitions without the inventory data, see [“Using the Migration Utility” on page 7](#).
- ♦ **Custom Reports:** Asset management and inventory custom reports defined in ZENworks Asset Management 7.5. The reports are migrated as a group. If you want to migrate custom reports without the inventory data, see [“Migrating Custom Reports” on page 22](#).

Migrating inventory data also migrates the following asset management data:

- ♦ Usage data
- ♦ Custom reports
- ♦ Administrator-defined fields

## 1.2.1 System Requirements

The migration utility requires the following:

- ♦ Windows XP Professional 5.1 SP 2, Windows XP Professional 5.1 SP 3, Windows Vista SP1 x86, Windows Server 2003 5.2 SP2, or Windows Server 2008 x86; Windows 2000 and Windows 2008 are not supported
- ♦ Network connectivity to source and destination database servers
- ♦ Migration source: ZENworks Asset Management 7.5
- ♦ Migration destination: ZENworks 11 SP2 Asset Management
- ♦ Microsoft .NET Framework Version 2.0 Re-distributable Package (x86)
- ♦ (Optional) ZENworks 11 SP2 Asset Management. This product is required to view migrated asset management data.

The following combinations of databases can be used to migrate data:

- ♦ SQL Server to SQL Server
- ♦ SQL Server to Sybase
- ♦ Oracle to Oracle

For migration purposes, the Oracle databases can be Oracle 9.2, Oracle 10.1, or Oracle 10.2. If you are using an Oracle database, please observe the following:

- ♦ The Oracle client must be installed on the machine that runs the migration utility. For versions 10.1 and 10.2, this must be Administrator, not InstantClient.
- ♦ For the Oracle 10.2 client, you must apply patch 5473334 (Doc ID 387818.1). Of the several data access components included in the patch, Oracle Provider for OLEDB version 10.2.0.2.20 is required.
- ♦ `TNSNAMES.ORA` must contain entries for both the source and destination database services. To create these entries automatically, log on to the ZENworks Asset Management 7.5 and ZENworks 11 SP2 Asset Management databases using the Oracle Enterprise Manager Console or Net Configuration Assistant—Local Net Service Name configuration. Note that the names used for the entries must match the corresponding service name exactly.

- ♦ The Oracle bin directory (e.g., C:\oracle\product\10.2.0\client\_1\BIN) must be in your PATH setting; however, directories from other Oracle products and installs must not be in your PATH setting.
- ♦ The user associated with the schema for the ZENworks Asset Management 7.5 Oracle database (NCSYSTEM by default) must have the “DBA” role while migration is running (by default, NCSYSTEM only has the “CONNECT” role).

## 1.2.2 The Migration Process

Migrating objects (inventory data, custom reports, and so on) consists of six steps:

1. Installing the migration utility. For more information, see [Section 1.3, “Downloading and Installing the ZENworks Migration Utility,”](#) on page 11.
2. Backing up both source and destination databases before starting migration and after each successful staging.
3. Selecting the migration source. For more information, see [Section 1.4, “Selecting the Migration Source,”](#) on page 11.
4. Selecting the migration destination. For more information, see [Section 1.5, “Selecting the Migration Destination,”](#) on page 13.

If you have selected a destination zone previously, for example, for a pilot migration, a dialog appears asking if you want to clear the migration status data stored in the ZENworks Asset Management 7.5 source database, which is necessary if you change your migration destination. Click OK to clear the migration status data.

---

**WARNING:** You cannot reselect a migration destination. For example, if you choose a pilot migration destination, then switch to a production destination, you cannot switch back to the pilot destination.

---

5. Selecting objects to migrate.  
Administrator-defined field definitions, local product definitions, and custom reports are migrated by default the first time inventory data is migrated. To migrate them separately, see [Section 1.6, “Migrating Objects,”](#) on page 15. Some custom reports are not migrated because of database schema changes. For more information, see [Section 1.6.7, “Migrating Custom Reports,”](#) on page 22.

When selecting objects to migrate, keep the following in mind:

- ♦ Inventory data and asset management data must be migrated using the same version of the migration utility.
- ♦ You can only migrate objects once.
- ♦ You need to migrate inventory data before asset management data.
- ♦ Workstations that have not been inventoried are not migrated. In addition, if the workstation is associated with a contract, the contract-workstation relationship isn’t migrated, either.

If you want to do a staged migration, select a subset of workstations to migrate. Do not migrate asset management data until all staging is complete. For more information about staging, see [“Staging a Migration”](#) on page 16.

6. Initiating the migration.

Migration can take several hours to complete, depending on the size of the database being migrated. During the migration, the migration utility may become unresponsive at times. If migration is interrupted or canceled, it can be restarted. The migration then continues from the

last migrated record in the migration process. If any errors are listed when the migration process is run again, you can ignore them. For more information, see [Section 1.6, "Migrating Objects,"](#) on page 15.

## 1.3 Downloading and Installing the ZENworks Migration Utility

Perform the following steps to download and install the ZENworks Migration Utility executable to the Windows device where you will be running the utility:

---

**NOTE:** Microsoft .NET Framework Version 2.0 Redistributable Package (x86) must be installed prior to installing the Migration utility.

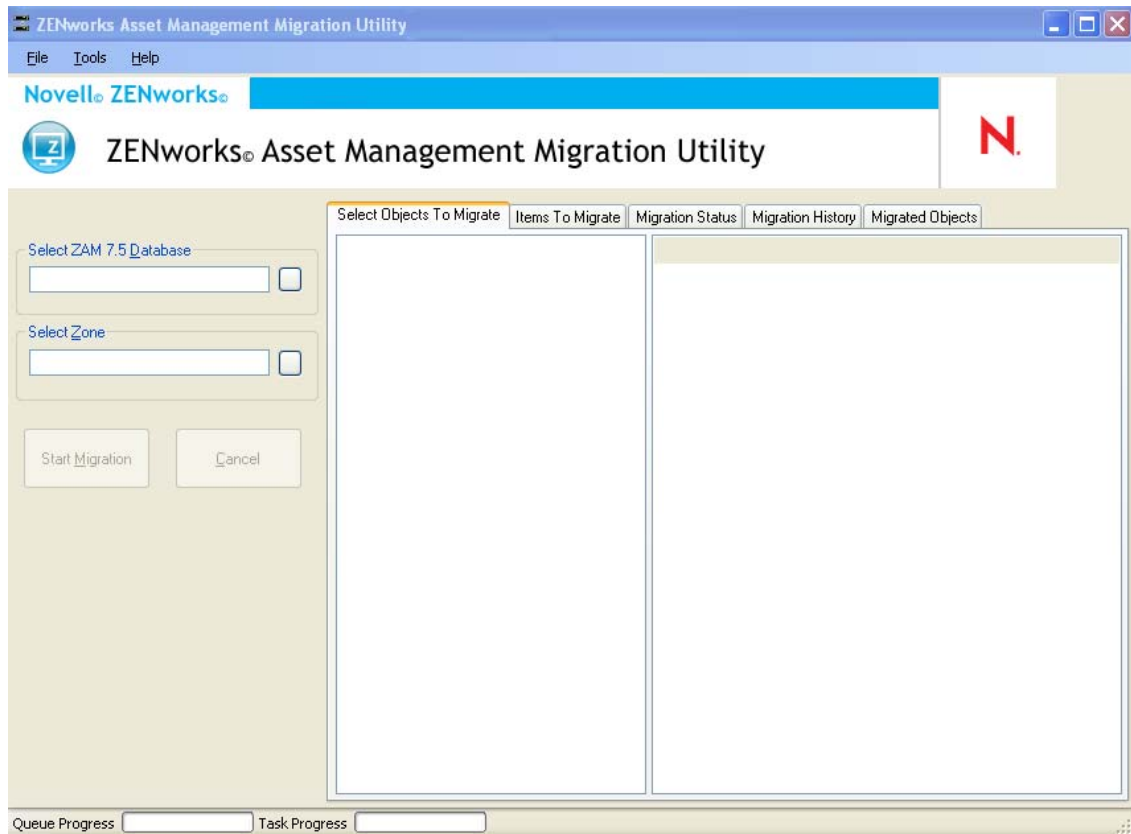
---

- 1 (Conditional) If an earlier version of the utility is already installed on the device, then uninstall it before installing the latest version.
- 2 You can download the ZENworks Asset Management Migration Utility to a temporary location from one of the following locations by using your Web browser:
  - ♦ **ZENworks download page:** Go to [http://zenworks\\_primary\\_server\\_id/zenworks-setup/?pageId=tools](http://zenworks_primary_server_id/zenworks-setup/?pageId=tools), and click `ZAMmigration.exe`. You will be automatically redirected to a page on Novell Download Site from where you can download the utility.
  - ♦ **Novell Download Site:** Go to <http://download.novell.com> and search for the ZENworks Configuration Management Migration Utility to download it.
- 3 Run `ZAMmigration.exe` to install it on your workstation.
- 4 To run the utility on a supported Windows device, click *Start > All Programs > Novell ZENworks > ZENworks Asset Management Migration Utility*.

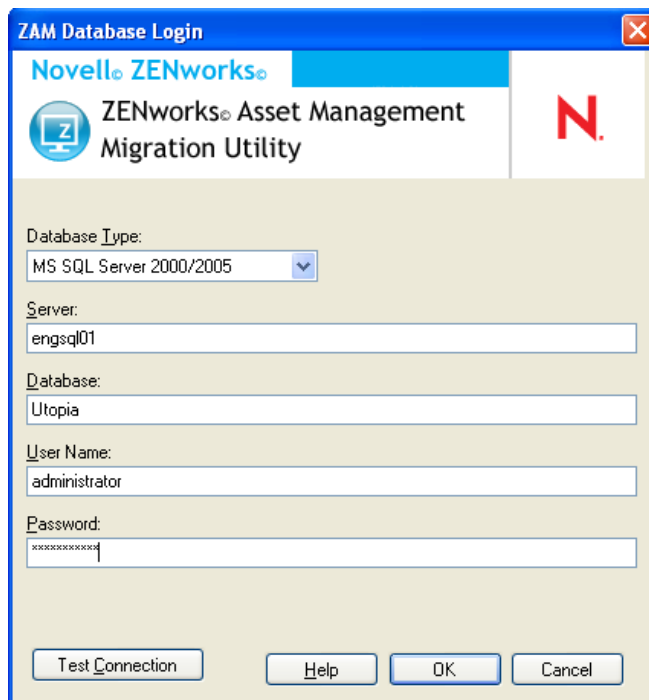
## 1.4 Selecting the Migration Source

The migration source is your ZENworks Asset Management 7.5 database. The migration utility requires that you log in to the migration source with create, modify, and delete privileges. To log in to your database:

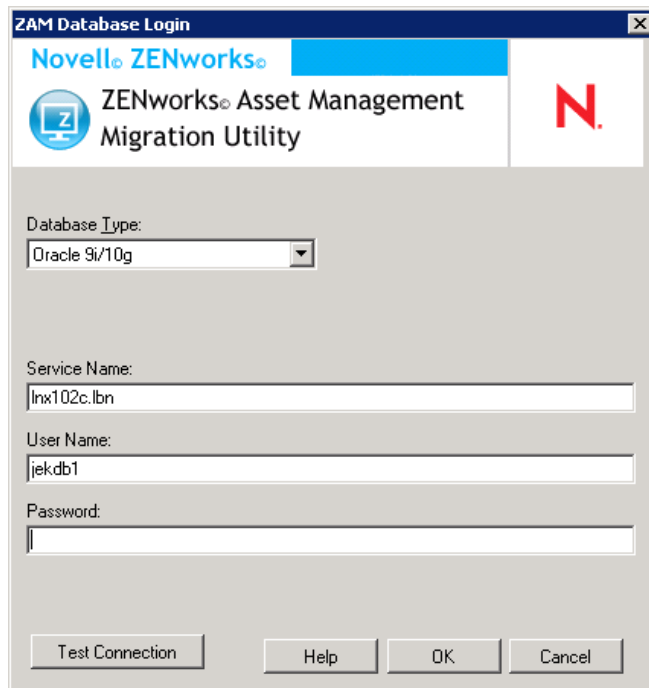
- 1 Click *Start > All Programs > Novell ZENworks > ZENworks Asset Management Migration Utility*.



- 2 Click the button to the right of the *Select ZAM Database* field. For Microsoft SQL migration, you see the following screen:



For Oracle migration, you see the following screen:



**3** Fill in the following fields:

**Database Type:** Specify the database type. For example, specify *MS SQL Server 2000/2005* for both external and embedded MS SQL Server databases. Or specify *Oracle 9i/10g* for the latest Oracle database type.

**Server:** Specify either the DNS name or IP address of the database server. Each time you use this dialog box, the last server you logged in to is displayed here.

**Database:** Specify the database name. Each time you use this dialog box, the last database you logged in to is displayed here.

**Service Name:** For Oracle migration, specify the service name. Each time you use this dialog box, the last service you logged in to is displayed here.

**User Name:** Specify the username. Each time you use this dialog box, the last username you used is displayed here.

**Password:** Specify the password. This must be specified every time to authenticate.

**4** Click *OK* to connect. You can click *Test Connection* first to verify that you can connect to the database.

**5** Continue with [Section 1.5, "Selecting the Migration Destination,"](#) on page 13.

## 1.5 Selecting the Migration Destination

To log in to your migration source Management Zone for ZENworks 11 SP2 Asset Management:

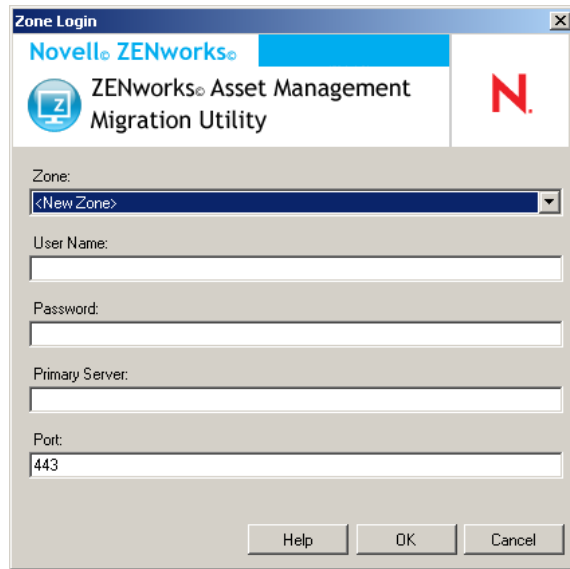
- 1 Make sure you've selected the migration source (see [Section 1.4, "Selecting the Migration Source,"](#) on page 11).
- 2 In the Migration Console, click the button to the right of the *Select Zone* field.

If you have previously selected a destination zone, such as for a pilot migration, a dialog box appears asking if you want to clear the migration status data stored in the ZENworks Asset Management 7.5 source database. This is necessary if you change your migration destination. Click **OK** to clear the migration status data.

---

**WARNING:** You cannot reselect a migration destination. For example, if you choose a pilot migration destination, then switch to a production destination, you cannot switch back to the pilot destination.

---



- 3 Fill in the following fields to authenticate to your destination Management Zone:

**Zone:** Specify your Management Zone. This field is not filled in the first time you access the *Zone Login* dialog box. Thereafter, any zone that you previously logged in to by using this dialog box is available from the drop-down list. Each time you use this dialog box, the last zone that you logged in to is displayed here.

**User Name:** Specify the username for the zone. *Administrator* is normally used. If this is the first time you have logged in to this zone by using the Migration Console, nothing is displayed; otherwise, the last username you used is displayed. If you select a Management Zone in the *Zone* field, this field is automatically populated with the username you last used for that zone.

**Password:** Specify the password. This must be entered every time to authenticate.

**Primary Server:** Specify either its DNS name or IP address. This field is automatically populated when you select a Management Zone in the *Zone* field.

**Port:** The standard port for the ZENworks Primary Server is 443. If the server is using a different port, specify that port number.

- 4 Click **OK**.

The *Select Objects To Migrate* tab shows the object groups available to migrate, along with the number of objects in each group.

- 5 Continue with [Section 1.6, "Migrating Objects,"](#) on page 15.

## 1.6 Migrating Objects

For details on migrating objects in each group, see the topics below. Although the steps to migrate different types of objects are presented separately, it isn't necessary to migrate one type of object at a time. You can migrate all data at once or choose what data to migrate. When you migrate inventory data, the administrator-defined fields, local product definitions, and custom report definitions are migrated by default.

When selecting objects to migrate, keep the following in mind:

- ◆ You can only migrate objects once.
- ◆ You need to migrate inventory data before asset management data.
- ◆ Inventory data and asset management data must be migrated using the same version of the migration utility.
- ◆ Workstations that have not been inventoried are not migrated. In addition, if the workstation is associated with a contract, the contract-workstation relationship isn't migrated, either.

If you want to do a staged migration, select a subset of workstations to migrate. Do not migrate asset management data until all staging is complete. For more information about staging, see [“Staging a Migration” on page 16](#).

To migrate the definitions only, see the related topics below:

- ◆ [Section 1.6.1, “Migrating Inventory Data,” on page 15](#)
- ◆ [Section 1.6.2, “Migrating Administrator-Defined Field Definitions,” on page 17](#)
- ◆ [Section 1.6.3, “Migrating Local Product Definitions,” on page 18](#)
- ◆ [Section 1.6.4, “Migrating Asset Management Data,” on page 19](#)
- ◆ [Section 1.6.5, “Migrating Asset Management Data Only,” on page 20](#)
- ◆ [Section 1.6.6, “Migrating License Records,” on page 22](#)
- ◆ [Section 1.6.7, “Migrating Custom Reports,” on page 22](#)
- ◆ [Section 1.6.8, “Migration Performance Guidelines,” on page 25](#)

For details about the Migration Console, see [Chapter 2, “Migration Console Reference,” on page 27](#).

### 1.6.1 Migrating Inventory Data

When you migrate inventory data, by default you migrate the following:

- ◆ Devices (including workstations marked as deleted, if desired. For more information, see [Section 1.6.1, “Migrating Inventory Data,” on page 15](#).)
- ◆ Device history
- ◆ Local software products
- ◆ Hardware/software components
- ◆ Asset management usage data
- ◆ Inventory and asset management administrator-defined fields (known as *user-defined* fields in ZENworks Asset Management 7.5)
- ◆ Inventory and asset management custom reports

---

**NOTE:** The Migrate All Inventory Data option is not available for Oracle database migration.

---

## Staging a Migration

You can do a staged migration by selecting a subset of workstations to migrate. Usage and inventory data is migrated when the workstation is migrated; additional usage and inventory data accumulating in ZENworks Asset Management 7.5 after initial migration of a workstation is not migrated.

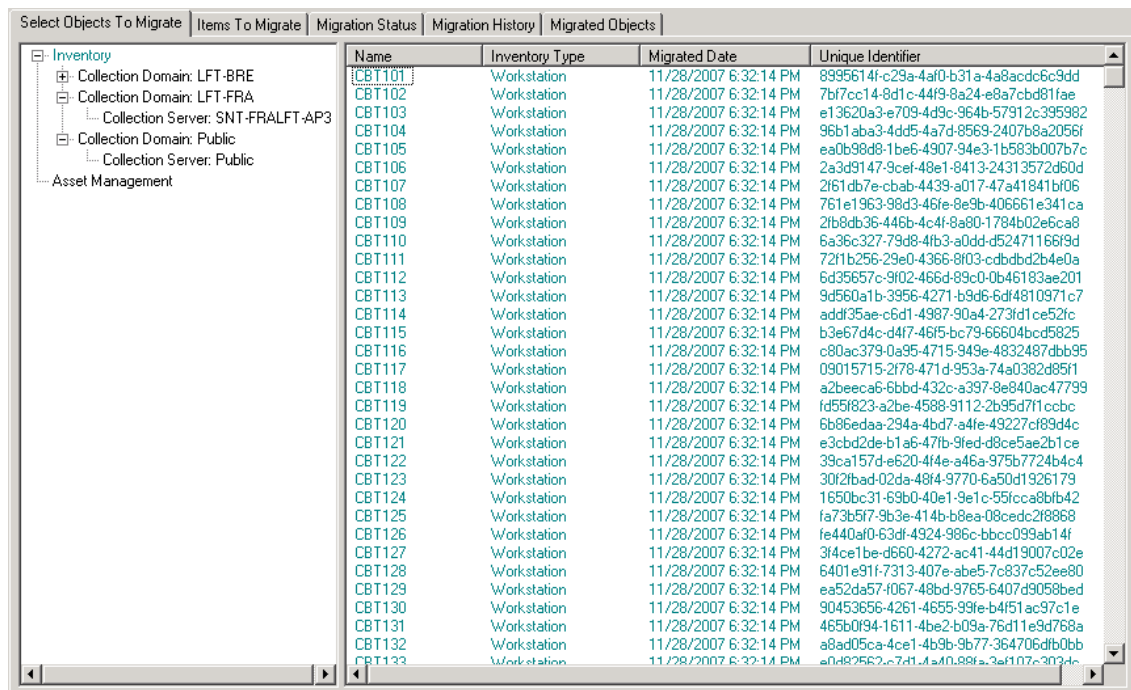
**NOTE:** Do not migrate asset management data until all staging is complete.

## Migrating Deleted Workstations

You can migrate workstations marked as deleted in ZENworks Asset Management 7.5 to ZENworks 11 SP2 Asset Management. After migration, these workstations appear as discovered devices in ZENworks Control Center (*Devices > Discovered > Devices created via ZENworks Asset Management Migration*), but they are filtered out of Asset Management reports. For information on migrating deleted workstations, see [Step 5 on page 17](#).

## Migrating Inventory Data

- 1 Click *Start > All Programs > Novell ZENworks > ZENworks Asset Management Migration Utility*.
- 2 Log in to your ZENworks Asset Management 7.5 database and the ZENworks 11 SP2 Management Zone as shown in [Section 1.4, "Selecting the Migration Source," on page 11](#) and [Section 1.5, "Selecting the Migration Destination," on page 13](#).
- 3 Click the *Select Objects To Migrate* tab.



Name	Inventory Type	Migrated Date	Unique Identifier
CBT101	Workstation	11/28/2007 6:32:14 PM	8995614f-c29a-4af0-b31a-4a8acd6c9dd
CBT102	Workstation	11/28/2007 6:32:14 PM	7b77cc14-8d1c-44f9-8a24-e8a7cbd81fae
CBT103	Workstation	11/28/2007 6:32:14 PM	e13620a3-e709-4d9c-964b-57912c395982
CBT104	Workstation	11/28/2007 6:32:14 PM	96b1aba3-4dd5-4a7d-8569-2407b8a2056f
CBT105	Workstation	11/28/2007 6:32:14 PM	ea0b98d8-1be6-4907-94e3-1b583b007b7c
CBT106	Workstation	11/28/2007 6:32:14 PM	2a3d9147-9cef-48e1-8413-24313572d60d
CBT107	Workstation	11/28/2007 6:32:14 PM	2f61db7e-cbab-4439-a017-47a1841bf06
CBT108	Workstation	11/28/2007 6:32:14 PM	761e1963-98d3-46fe-8e9b-406661e341ca
CBT109	Workstation	11/28/2007 6:32:14 PM	2fb8db36-446b-4c4f-8a80-1784b02e6ca8
CBT110	Workstation	11/28/2007 6:32:14 PM	6a36c327-79d8-4fb3-a0dd-d524711669d
CBT111	Workstation	11/28/2007 6:32:14 PM	72f1b256-29e0-4366-8f03-cdbdbd2b4e0a
CBT112	Workstation	11/28/2007 6:32:14 PM	6d35657c-9f02-466d-89c0-0b46183ae201
CBT113	Workstation	11/28/2007 6:32:14 PM	9d560a1b-3956-4271-b9d6-6df4810971c7
CBT114	Workstation	11/28/2007 6:32:14 PM	addf35ae-c6d1-4987-90a4-273fd1ce52fc
CBT115	Workstation	11/28/2007 6:32:14 PM	b3e67d4c-d4f7-46f5-bc79-66604bcd5825
CBT116	Workstation	11/28/2007 6:32:14 PM	c80ac379-0a95-4715-949e-4832487dbb95
CBT117	Workstation	11/28/2007 6:32:14 PM	09015715-2f79-471d-953a-74a0382d85f1
CBT118	Workstation	11/28/2007 6:32:14 PM	a2beeca6-6bbd-432c-a397-9e840ac47799
CBT119	Workstation	11/28/2007 6:32:14 PM	fd55f823-a2be-4588-9112-2b95d7f1ccbc
CBT120	Workstation	11/28/2007 6:32:14 PM	6b86edaa-294a-4bd7-a4fe-49227cf89d4c
CBT121	Workstation	11/28/2007 6:32:14 PM	e3cbd2de-b1a6-47fb-9fed-d8ce5ae2b1ce
CBT122	Workstation	11/28/2007 6:32:14 PM	39ca157d-e620-4f4e-a46a-975b7724b4c4
CBT123	Workstation	11/28/2007 6:32:14 PM	30f2bad-02da-48f4-9770-6a50d1926179
CBT124	Workstation	11/28/2007 6:32:14 PM	1650bc31-69b0-40e1-9e1c-551cca8bfb42
CBT125	Workstation	11/28/2007 6:32:14 PM	fa73b5f7-9b3e-414b-b8ea-08cedc2f8688
CBT126	Workstation	11/28/2007 6:32:14 PM	fe440af0-63df-4924-986c-bbcc099ab14f
CBT127	Workstation	11/28/2007 6:32:14 PM	3f4ce1be-d660-4272-ac41-44d19007c02e
CBT128	Workstation	11/28/2007 6:32:14 PM	6401e91f-7313-407e-abe5-7c837c52ee80
CBT129	Workstation	11/28/2007 6:32:14 PM	ea52da57-067-48bd-9765-6407d9058bed
CBT130	Workstation	11/28/2007 6:32:14 PM	90453656-4261-4655-99fe-b4f51ac97c1e
CBT131	Workstation	11/28/2007 6:32:14 PM	465b0f94-1611-4be2-b09a-76d11e9d768a
CBT132	Workstation	11/28/2007 6:32:14 PM	a8ad05ca-4ce1-4b9b-9b77-364706dfb0bb
CBT133	Workstation	11/28/2007 6:32:14 PM	a0487562-c7d1-4a40-88f3-3a5f07c3034d

- 4 Click *Inventory* and select the desired collection domain and collection server.  
A list of workstations is shown on the right.



5 Select the data to migrate.

- ◆ To select all workstations, right-click *Inventory* and select *Migrate All Inventory Data*. (The *Migrate All Inventory Data* option is not available for Oracle migration.)
- ◆ To select individual workstations, right-click a workstation listed on the right side of the panel and select *Add Item(s) To Migration Queue*. You can Shift+click or Ctrl+click to select more than one item.

---

**NOTE:** To migrate workstations marked as deleted, click *Tools > Options* and select *Migrate Deleted Workstations*.

---

6 (Optional) To remove workstations from the migration list, click the *Items to Migrate* tab, then right-click the workstation and select *Remove Item(s) from Migration Queue*.

7 Click *Start Migration*.

The *Migration Status* tab opens and displays the migration details. Migrated workstations appear as discovered devices in ZENworks Control Center (*Devices > Discovered > Devices created via ZENworks Asset Management Migration*).

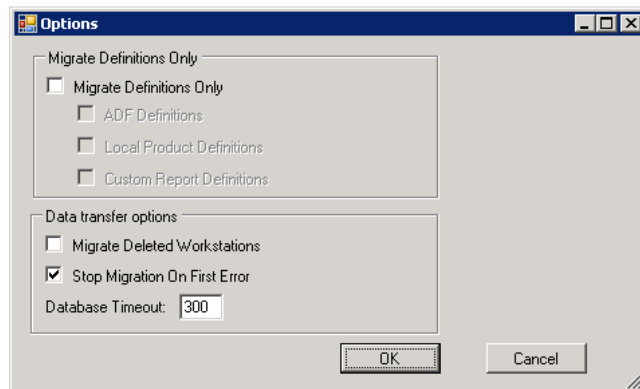
If you receive any of the following messages, see [Section A.2, “ZAM Migration Utility Messages,” on page 36](#):

- ◆ There are no ZENworks 7 Desktop Management GUIDs in the inventory data.
- ◆ There are devices in your ZENworks Asset Management inventory data that are already present in the ZENworks Configuration Management target database.
- ◆ This ZENworks Asset Management device will not be migrated because it is already present in the ZENworks Configuration Management target database.

## 1.6.2 Migrating Administrator-Defined Field Definitions

Asset management and inventory administrator-defined field definitions are migrated automatically the first time an inventory migration is run. (Asset management administrator-defined fields are known as *user-defined* fields in ZENworks Asset Management 7.5.) If you want to migrate just the administrator-defined fields and not the inventory data, do the following:

- 1 Click *Start > All Programs > Novell ZENworks > ZENworks Asset Management Migration Utility*.
- 2 Log in to your ZENworks Asset Management 7.5 database and the ZENworks 11 SP2 Management Zone as shown in [Section 1.4, “Selecting the Migration Source,” on page 11](#) and [Section 1.5, “Selecting the Migration Destination,” on page 13](#).
- 3 Click *Tools > Options* to open the *Options* window.



- 4 Select *Migrate Definitions Only*.

- 5 Select *ADF Definitions*.
- 6 Click *OK*.
- 7 Right-click *User Defined Fields* and select *Migrate All User Defined Fields*.

The number of user-defined fields is displayed in the *Items To Migrate* tab. To remove the user-defined fields from the list, click the *Items To Migrate* tab, right-click *All User Defined Fields*, and select *Remove 'All User Defined Fields' from migration queue*. User-defined fields cannot be migrated individually.

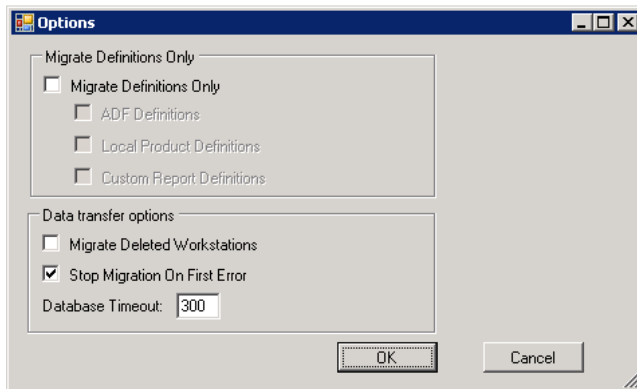
- 8 Click *Start Migration*.

The *Migration Status* tab opens and displays the migration details. Click *Cancel* to stop the process.

### 1.6.3 Migrating Local Product Definitions

Local product definitions are migrated automatically the first time an inventory migration is run. If you want to migrate just the local product definitions and not the inventory data, do the following:

- 1 Click *Start > All Programs > Novell ZENworks > ZENworks Asset Management Migration Utility*.
- 2 Log in to your ZENworks Asset Management 7.5 database and the ZENworks 11 SP2 Management Zone shown in [Section 1.4, "Selecting the Migration Source," on page 11](#) and [Section 1.5, "Selecting the Migration Destination," on page 13](#).
- 3 Click *Tools > Options* to open the *Options* window.



- 4 Select *Migrate Definitions Only*.
- 5 Select *Local Product Definitions*.
- 6 Click *OK*.
- 7 Right-click *Local Products* and select *Migrate All Local Product Definitions*.
- 8 (Optional) To remove the local product definitions from the migration list, click *Items to Migrate*, then right-click *All Local Product Definitions* and select *Remove 'All Local Product Definitions' from migration queue*.
- 9 Click *Start Migration*.

The *Migration Status* tab opens and displays the migration details.

## 1.6.4 Migrating Asset Management Data

Migrated asset management data includes the following:

- ◆ Catalog products
- ◆ Discovered products
- ◆ Purchase records
- ◆ Licensed products (For more information on licensed product migration, see [Section 1.6.6, “Migrating License Records,”](#) on page 22.)
- ◆ Software collections
- ◆ Contracts and date notifications
- ◆ Documents
- ◆ License allocations, except for the following:
  - ◆ Allocations associated with “upgrade from” licensed products
  - ◆ Demographic allocations associated with the demographic value of “none”

---

**NOTE:** User-defined field values for catalog products and license records that are available in ZENworks Asset Management 7.5 IR 14 are not migrated.

---

---

**WARNING:** Do not migrate asset management data until you have migrated all the inventory workstations you intend to migrate.

---

To migrate asset management data:

- 1 Click *Start > All Programs > Novell ZENworks > ZENworks Asset Management Migration Utility*.
- 2 Log in to your ZENworks Asset Management 7.5 database and the ZENworks 11 SP2 Management Zone as shown in [Section 1.4, “Selecting the Migration Source,”](#) on page 11 and [Section 1.5, “Selecting the Migration Destination,”](#) on page 13.
- 3 Click the *Select Objects to Migrate* tab.

Select Objects To Migrate	Items To Migrate	Migration Status	Migration History	Migrated Objects
<ul style="list-style-type: none"> <li>Inventory           <ul style="list-style-type: none"> <li>Collection Domain: LFT-BRE</li> <li>Collection Domain: LFT-FRA</li> <li>Collection Server: SNT-FRALFT-AP3</li> <li>Collection Domain: Public               <ul style="list-style-type: none"> <li>Collection Server: Public</li> </ul> </li> <li>Asset Management</li> </ul> </li> </ul>				
Name	Inventory Type	Migrated Date	Unique Identifier	
CBT101	Workstation	11/28/2007 6:32:14 PM	8995614f-c29a-4af0-b31a-4a8acd6c9dd	
CBT102	Workstation	11/28/2007 6:32:14 PM	7b7cc14-8d1c-44f9-8a24-e8a7cbd81fae	
CBT103	Workstation	11/28/2007 6:32:14 PM	e13620a3-e709-4d9c-964b-57912c395982	
CBT104	Workstation	11/28/2007 6:32:14 PM	96b1aba3-4dd5-4a7d-8569-2407b8a2056f	
CBT105	Workstation	11/28/2007 6:32:14 PM	ea0b99d8-1be6-4907-94e3-1b593b007b7c	
CBT106	Workstation	11/28/2007 6:32:14 PM	2a3d9147-9cef-48e1-8413-24313572d60d	
CBT107	Workstation	11/28/2007 6:32:14 PM	2161db7e-cbab-4439-a017-47a41841b106	
CBT108	Workstation	11/28/2007 6:32:14 PM	761e1963-98d3-46fe-8e9b-406661e341ca	
CBT109	Workstation	11/28/2007 6:32:14 PM	21b8db36-446b-4c4f-8a80-1784b026eca8	
CBT110	Workstation	11/28/2007 6:32:14 PM	6a36c327-79d8-4fb3-a0dd-d52471166f9d	
CBT111	Workstation	11/28/2007 6:32:14 PM	72f1b256-29e0-4366-8f03-cdbdbd2b4e0a	
CBT112	Workstation	11/28/2007 6:32:14 PM	6d35657c-9f02-466d-89c0-0b46183ae201	
CBT113	Workstation	11/28/2007 6:32:14 PM	9d560a1b-3956-4271-b9d6-6dd4810971c7	
CBT114	Workstation	11/28/2007 6:32:14 PM	add135ae-c6d1-4987-90a4-273d1ce52fc	
CBT115	Workstation	11/28/2007 6:32:14 PM	b3e67d4c-4d7f-46f5-bc79-66604bcd5825	
CBT116	Workstation	11/28/2007 6:32:14 PM	c80ac379-0a95-4715-949e-4832487dbb95	
CBT117	Workstation	11/28/2007 6:32:14 PM	09015715-2f78-471d-953a-74a0382d85f1	
CBT118	Workstation	11/28/2007 6:32:14 PM	a2beeca6-6bbd-432c-a397-9e840ac47799	
CBT119	Workstation	11/28/2007 6:32:14 PM	fd5f823-a2be-4588-9112-2b95d711ccbc	
CBT120	Workstation	11/28/2007 6:32:14 PM	6b86edaa-294a-4bd7-a4fe-49227cf89d4c	
CBT121	Workstation	11/28/2007 6:32:14 PM	e3cbd2de-b1a6-471b-9fed-d8ce5ae2b1ce	
CBT122	Workstation	11/28/2007 6:32:14 PM	39ca157d-e620-4f4e-a46a-975b7724b4c4	
CBT123	Workstation	11/28/2007 6:32:14 PM	30f2bad-02da-48f4-9770-6a501926179	
CBT124	Workstation	11/28/2007 6:32:14 PM	1650bc31-69b0-40e1-9e1c-5f1cca8bfb42	
CBT125	Workstation	11/28/2007 6:32:14 PM	fa73bf5f-9b3e-414b-b8ea-08cedc2f8868	
CBT126	Workstation	11/28/2007 6:32:14 PM	fe44a0f0-63df-4324-986c-bbcc099ab14f	
CBT127	Workstation	11/28/2007 6:32:14 PM	3f4ce1be-d660-4272-ac41-44d19007c02e	
CBT128	Workstation	11/28/2007 6:32:14 PM	6401e91f-7313-407e-abe5-7c837c52ee80	
CBT129	Workstation	11/28/2007 6:32:14 PM	ea52da57-f067-48bd-9765-6407d9058bed	
CBT130	Workstation	11/28/2007 6:32:14 PM	90453656-4261-4655-99fe-b4f51e9d37c1e	
CBT131	Workstation	11/28/2007 6:32:14 PM	465b0f94-1611-4be2-b09a-76d11e9d768a	
CBT132	Workstation	11/28/2007 6:32:14 PM	a8ad05ca-4ce1-4b9b-9b77-364706dfb0bb	
CBT133	Workstation	11/28/2007 6:32:14 PM	a0d82562-c7d1-4a40-89fa-3af107c3034f	

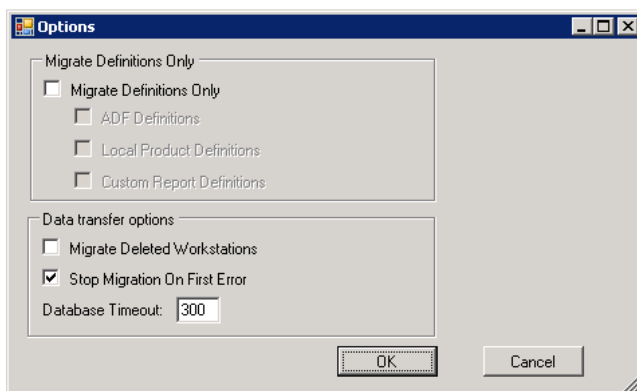
- 4 Right-click *Asset Management* and select *Migrate All Asset Management Data*.
- 5 (Optional) Click the *Items to Migrate* tab to see what items will be migrated.
- 6 Click *Start Migration*.

The *Migration Status* tab opens and displays the migration details.

## 1.6.5 Migrating Asset Management Data Only

If you want to migrate asset management data (see [Section 1.6.4, “Migrating Asset Management Data,”](#) on page 19) plus asset management custom reports and administrator-defined fields, do the following:

- 1 Click *Start > All Programs > Novell ZENworks > ZENworks Asset Management Migration Utility*.
- 2 Log in to your ZENworks Asset Management 7.5 database and the ZENworks 11 SP2 Management Zone as shown in [Section 1.4, “Selecting the Migration Source,”](#) on page 11 and [Section 1.5, “Selecting the Migration Destination,”](#) on page 13.
- 3 Click *Tools > Options* to open the *Options* window.



- 4 Select *Migrate Definitions Only*.
- 5 Select *ADF Definitions, Local Product Definitions, and Custom Report Definitions*.

---

**NOTE:** User-defined field values for catalog products and license records that are available in ZENworks Asset Management 7.5 IR 14 are not migrated.

---

- 6 Click *OK*.
- 7 On the *Select Objects to Migrate* tab, do the following:
  - 7a Right-click *User Defined Fields* and select *Migrate All User Defined Fields*.
  - 7b Right-click *Local Products* and select *Migrate All Local Products*.
  - 7c Right-click *Custom Reports* and select *Migrate All Custom Reports*.
- 8 Click *Start Migration* and wait for the migration to finish.
- 9 Repeat [Step 3](#) to open the *Options* window once again.
- 10 Uncheck *Migrate Definitions Only*.
- 11 Click *OK*.
- 12 Click the *Select Objects to Migrate* tab.

Name	Inventory Type	Migrated Date	Unique Identifier
CBT101	Workstation	11/28/2007 6:32:14 PM	8995614f-c29a-4af0-b31a-4a8a0dc6c9dd
CBT102	Workstation	11/28/2007 6:32:14 PM	7b7cc14-8d1c-44f9-8a24-e8a7cbd81fae
CBT103	Workstation	11/28/2007 6:32:14 PM	e13620a3-e709-4d9c-964b-57912c395982
CBT104	Workstation	11/28/2007 6:32:14 PM	96b1aba3-4dd5-4a7d-8569-2407b8a2056f
CBT105	Workstation	11/28/2007 6:32:14 PM	ea0b98d8-1be6-4907-94e3-1b583b007b7c
CBT106	Workstation	11/28/2007 6:32:14 PM	2a3d9147-9cef-48e1-8413-24313572d60d
CBT107	Workstation	11/28/2007 6:32:14 PM	2f61db7e-cbab-4439-a017-47a41841bf06
CBT108	Workstation	11/28/2007 6:32:14 PM	761e1963-98d3-46fe-8e9b-406661e341ca
CBT109	Workstation	11/28/2007 6:32:14 PM	2fb8db36-446b-4c4f-8a90-1784b02e6ca8
CBT110	Workstation	11/28/2007 6:32:14 PM	6a36c327-79d8-4fb3-a0dd-d52471166f9d
CBT111	Workstation	11/28/2007 6:32:14 PM	72f1b256-29e0-4366-8f03-cdbdbd2b4e0a
CBT112	Workstation	11/28/2007 6:32:14 PM	6d36657c-9f02-466d-89c0-0b46183ae201
CBT113	Workstation	11/28/2007 6:32:14 PM	9d560a1b-3956-4271-b9d6-6d4810971c7
CBT114	Workstation	11/28/2007 6:32:14 PM	addf35ae-c6d1-4987-90a4-273d1ce52fc
CBT115	Workstation	11/28/2007 6:32:14 PM	b3e67d4c-d4f7-46f5-bc79-66604bcd5825
CBT116	Workstation	11/28/2007 6:32:14 PM	c80ac379-0a95-4715-949e-4832487dbb95
CBT117	Workstation	11/28/2007 6:32:14 PM	09015715-2f78-471d-953a-74a0382d85f1
CBT118	Workstation	11/28/2007 6:32:14 PM	a2beeca6-6bbd-432c-a397-8e840ac47799
CBT119	Workstation	11/28/2007 6:32:14 PM	fd55f823-a2be-4588-9112-2b95d7f1ccbc
CBT120	Workstation	11/28/2007 6:32:14 PM	6b86edaa-294a-4bd7-a4fe-49227cf89d4c
CBT121	Workstation	11/28/2007 6:32:14 PM	e3cbd2de-b1a6-47fb-9fed-d8ce5ae2b1ce
CBT122	Workstation	11/28/2007 6:32:14 PM	39ca157d-e620-4f4e-a46a-975b7724b4c4
CBT123	Workstation	11/28/2007 6:32:14 PM	30f2fbad-02da-48f4-9770-6a50d1926179
CBT124	Workstation	11/28/2007 6:32:14 PM	1650bc31-69b0-40e1-9e1c-55fcca8bfb42
CBT125	Workstation	11/28/2007 6:32:14 PM	fa73b5f7-9b3e-414b-b8ea-08cedc2f8868
CBT126	Workstation	11/28/2007 6:32:14 PM	fe440af0-63df-4924-986c-bbcc099ab14f
CBT127	Workstation	11/28/2007 6:32:14 PM	3f4ce1be-d660-4272-ac41-44d19007c02e
CBT128	Workstation	11/28/2007 6:32:14 PM	6401e91f-7313-407e-abe5-7c837c52ee80
CBT129	Workstation	11/28/2007 6:32:14 PM	ea52ea57-f067-48bd-9765-6407d9058bed
CBT130	Workstation	11/28/2007 6:32:14 PM	90453656-4261-4655-99fe-b4f51ac97c1e
CBT131	Workstation	11/28/2007 6:32:14 PM	465b0f94-1611-4be2-b09a-76d11e9d768a
CBT132	Workstation	11/28/2007 6:32:14 PM	a8ad05ca-4ce1-4b9b-9b77-364706dfb0bb
CBT133	Workstation	11/28/2007 6:32:14 PM	e0d82562-c7d1-4a40-88fa-3a1f07c3034c

- 13 Right-click *Asset Management* and select *Migrate All Asset Management Data*.
- 14 Click *Start Migration*.

The *Migration Status* tab opens and displays the migration details.

## 1.6.6 Migrating License Records

License records in ZENworks Asset Management 7.5 have been replaced in ZENworks11 SP2 Asset Management with licensed products, which contain license entitlements. License entitlements contain the information required for compliance and proof of ownership.

When a ZENworks Asset Management 7.5 license record is migrated to ZENworks 11 SP2 Asset Management, a licensed product with a single license entitlement is created in ZENworks 11 SP2 Asset Management. The license entitlement contains all the compliance and proof of ownership information previously associated with the ZENworks Asset Management 7.5 license record, including the following:

- ◆ Reconciled discovered products
- ◆ Reconciled catalog products (and associated purchase records)
- ◆ Attached documents
- ◆ Associated contracts

User-defined field values for license records that are available in ZENworks Asset Management 7.5 IR 14 are not migrated.

If you have ZENworks Asset Management 7.5 license records with version upgrades, all license records in the upgrade path are consolidated in a single ZENworks11 Asset Management licensed product with multiple license entitlements, one entitlement for each license record in the upgrade path.

In ZENworks Asset Management 7.5, version upgrades can be linked to multiple sources, but in ZENworks 11 SP2 Asset Management, version upgrade license entitlements can only be linked to a single underlying entitlement. If you have upgrades that have been linked to multiple sources in ZENworks Asset Management 7.5, you need to review or modify the associated licensed products and license entitlements in ZENworks11 Asset Management after migration.

## 1.6.7 Migrating Custom Reports

The following topics provide more information on migrating custom reports:

- ◆ [“Reports That Are Migrated” on page 22](#)
- ◆ [“Reports That Are Not Migrated” on page 23](#)
- ◆ [“Migrating Custom Reports from ZENworks Asset Management” on page 24](#)

### Reports That Are Migrated

The following ZENworks Asset Management 7.5 custom reports can be migrated to ZENworks 11 SP2 Asset Management:

- ◆ Workstation inventory reports
- ◆ Software usage reports
- ◆ Software management reports
- ◆ Contract management reports

In addition, Custom Report Alerts/Schedules, along with the e-mail list from ZENworks Asset Management 7.5, are migrated with custom reports. After migration, ZENworks 11 SP2 Asset Management evaluates each report to determine if it needs to be run. The option to attach the report results in CSV format is changed during migration to attach the results in an Excel format.

You can view schedule information for a report in ZENworks Control Center by navigating to the specific report page and clicking *Schedule/Notification*. You can view the e-mail list by clicking *Configuration > Asset Inventory*.

## Reports That Are Not Migrated

The following reports are not migrated:

- ◆ Reports containing the following fields:
  - ◆ Workstation Is Checked Out
  - ◆ Workstation Checked In/Out Date
  - ◆ Product License Count
  - ◆ Product License ID
  - ◆ Product License Name
  - ◆ (Product) License Required
  - ◆ License Platform
  - ◆ Last Scan Date/Time
  - ◆ Default Gateway (Workstation)
  - ◆ Subnet Mask (Workstation)
  - ◆ Over/Under (Summary) (Software Compliance)
  - ◆ Any fields related to Connection Information, Collection Servers, or Collection Domains

If you want to migrate a report containing one or more of the fields above, create a version of the report in ZENworks Asset Management 7.5 with those fields removed and then migrate that version. If you don't remove those fields, no part of the report is migrated. Keep in mind that reports can only be migrated once.

- ◆ Custom reports distributed with ZENworks Asset Management 7.5. Equivalent reports are available in ZENworks 11 SP2 Asset Management. If you have made changes to these reports in ZENworks Asset Management 7.5 and want to keep those changes, make a copy before migrating the reports, and the copy is migrated.
- ◆ Stored report results (Stored report results can be viewed in ZENworks Asset Management 7.5.)
- ◆ Report folder rights. By default, all ZENworks 11 SP2 Asset Management users have read-only access to the migrated report folders.
- ◆ Reports with the following focus are not migrated:
  - ◆ Connection Information
  - ◆ Component Filtering
  - ◆ Hardware - DMI
  - ◆ License Allocation - Demographic
  - ◆ License Allocation - Workstation
  - ◆ Licenses - Associated Documents
  - ◆ Purchase/License/Inventory Infrastructure

- ♦ Reports with a criteria of Workstation in Report or Workstation not in Report when the following criteria are met:
  - ♦ The referenced report will not be migrated and the reference report is not one of the predefined reports distributed with ZENworks 11 SP2 Asset Management.
  - ♦ The custom report is based on a predefined report whose report definition has been modified or deleted in ZENworks 11 SP2 Asset Management.

---

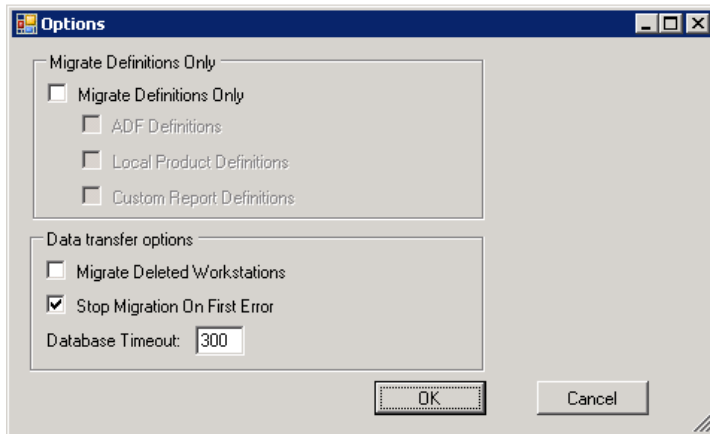
**NOTE:** A bug in ZENworks Asset Management 7.5 can cause an error when Hardware – System Board reports are imported into ZENworks 11 SP2 Asset Management. This is because in ZENworks Asset Management 7.5, both Bus 1 Slot and Bus 2 Slot columns are linked to the Bus 2 Slot column in the database. Reports containing both of these columns cause the following error message: `NC_SystemBoard.Bus2Slots is not unique`. To resolve this, go to the report definition and remove one of the Bus 2 Slot columns from the list of selected columns.

---

## Migrating Custom Reports from ZENworks Asset Management

Custom reports are migrated automatically the first time an inventory migration is run. If you want to migrate just the custom reports and not the inventory data, do the following:

- 1 Click *Start > All Programs > Novell ZENworks > ZENworks Asset Management Migration Utility*.
- 2 Log in to your ZENworks Asset Management 7.5 database and the ZENworks 11 SP2 Management Zone as shown in [Section 1.4, “Selecting the Migration Source,” on page 11](#) and [Section 1.5, “Selecting the Migration Destination,” on page 13](#).
- 3 Click *Tools > Options* to open the *Options* window.



- 4 Select *Migrate Definitions Only*.
- 5 Select *Custom Report Definitions*.

Reports are migrated in a group; they cannot be migrated individually. Administrator-defined field definitions should be migrated with or before custom report definitions. If administrator-defined field definitions are not migrated, any custom report containing administrator-defined field columns is blocked from migration.

- 6 Click *OK*.
- 7 Click *Start Migration*.

The *Migration Status* tab opens and displays the migration details. Migrated folders have the prefix `migrate` added to the folder name.



## 1.6.8 Migration Performance Guidelines

Migrating all inventory data takes significantly longer than migrating asset management data only, unless the inventory has very few devices. The guidelines listed below are very broad, and your actual performance depends on several factors, including:

- ◆ Configuration of the database server(s) hosting the ZENworks Asset Management 7.5 and ZENworks 11 SP2 Asset Management databases
- ◆ Network speed and configuration
- ◆ Amount of Usage and History data in the ZENworks Asset Management 7.5 database

It is strongly recommended that you purge the ZENworks Asset Management 7.5 database before you begin the migration process.

- ◆ [“Migrating To SQL Server” on page 25](#)
- ◆ [“Migrating To Sybase Embedded” on page 25](#)
- ◆ [“Migrating To Oracle” on page 25](#)

### Migrating To SQL Server

- ◆ Small databases (200 devices) should take less than 30 minutes
- ◆ Medium databases (1500 devices) should take less than 1 hour
- ◆ Very Large databases (30,000 devices) can take 12-24 hours

### Migrating To Sybase Embedded

- ◆ Small databases (200 devices) should take less than 30-45 minutes
- ◆ Larger databases (1000 devices) should take less than 1 hour

### Migrating To Oracle

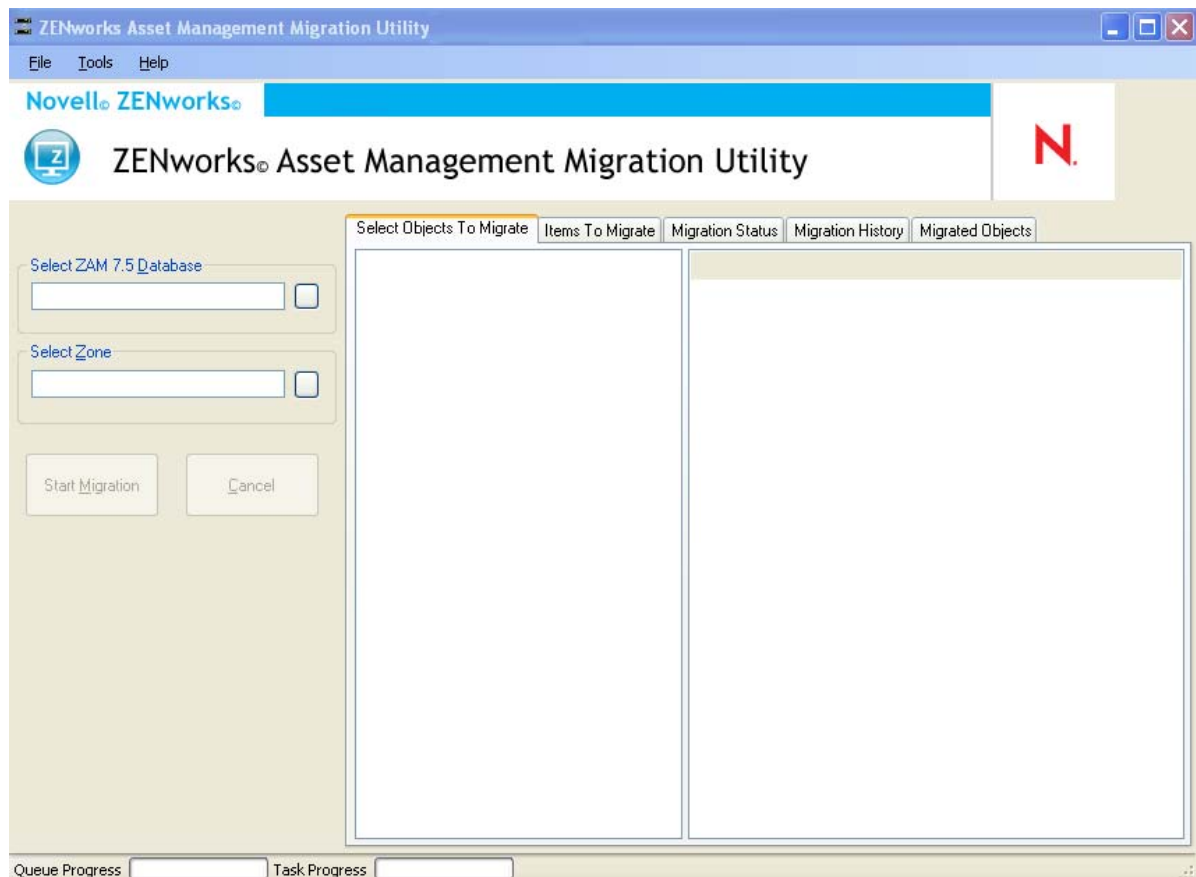
- ◆ Expect 30-45 seconds per device migrated



# 2 Migration Console Reference

When you log in to the Novell ZENworks 11 SP2 Asset Management Migration utility, the migration console is displayed

**Figure 2-1** The Migration Console



The following sections provide reference information to help you navigate and use the console features:

- ◆ [Section 2.1, “Menu Options,” on page 28](#)
- ◆ [Section 2.2, “Select Objects to Migrate Tab,” on page 29](#)
- ◆ [Section 2.3, “Items to Migrate Tab,” on page 30](#)
- ◆ [Section 2.4, “Migration Status Tab,” on page 30](#)
- ◆ [Section 2.5, “Migration History Tab,” on page 30](#)
- ◆ [Section 2.6, “Migrated Objects Tab,” on page 30](#)
- ◆ [Section 2.7, “Select ZAM Database Field,” on page 31](#)

- ♦ Section 2.8, “Select Zone Field,” on page 32
- ♦ Section 2.9, “Start Migration Button,” on page 33
- ♦ Section 2.10, “Cancel Button,” on page 33
- ♦ Section 2.11, “Migration Queue Progress,” on page 33
- ♦ Section 2.12, “Migration Task Progress,” on page 34

## 2.1 Menu Options

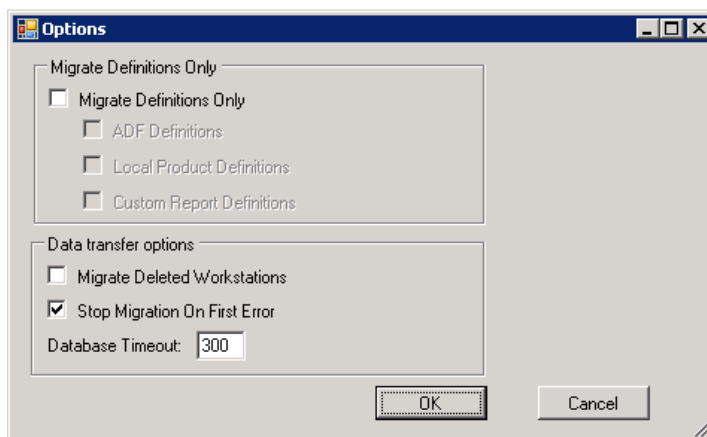
The following options are available:

- ♦ **File:** Click *File > Exit* to exit the migration console.
- ♦ **Tools:** Click *Tools > Options* to open the *Options* window, where you select the object definitions you want to migrate: administrator-defined field definitions, local product definitions, or custom report definitions. Select these options only if you will not be migrating inventory data. If you migrate inventory data, these definitions are migrated by default. For more information, see [Section 1.6, “Migrating Objects,” on page 15](#).

The *Options* window also allows you to select data transfer options:

- ♦ **Migrate Deleted Workstations:** Select this option to migrate workstations that are marked for deletion in ZENworks Asset Management 7.5.
- ♦ **Stop Migration On First Error:** Select this option to stop the migration process on the first encountered error. For SQL Server, unchecking this option might result in partial loss of data when restarting a failed migration. For more information, see [Appendix B, “ZENworks Objects and Their Uniqueness,” on page 39](#).
- ♦ **Database Timeout:** This option allows you to set how long a query can take before it times out. The default value is 300 seconds (5 minutes). You might need to increase this value if you are querying over a slow or a congested connection.

**Figure 2-2** *The Options Window*



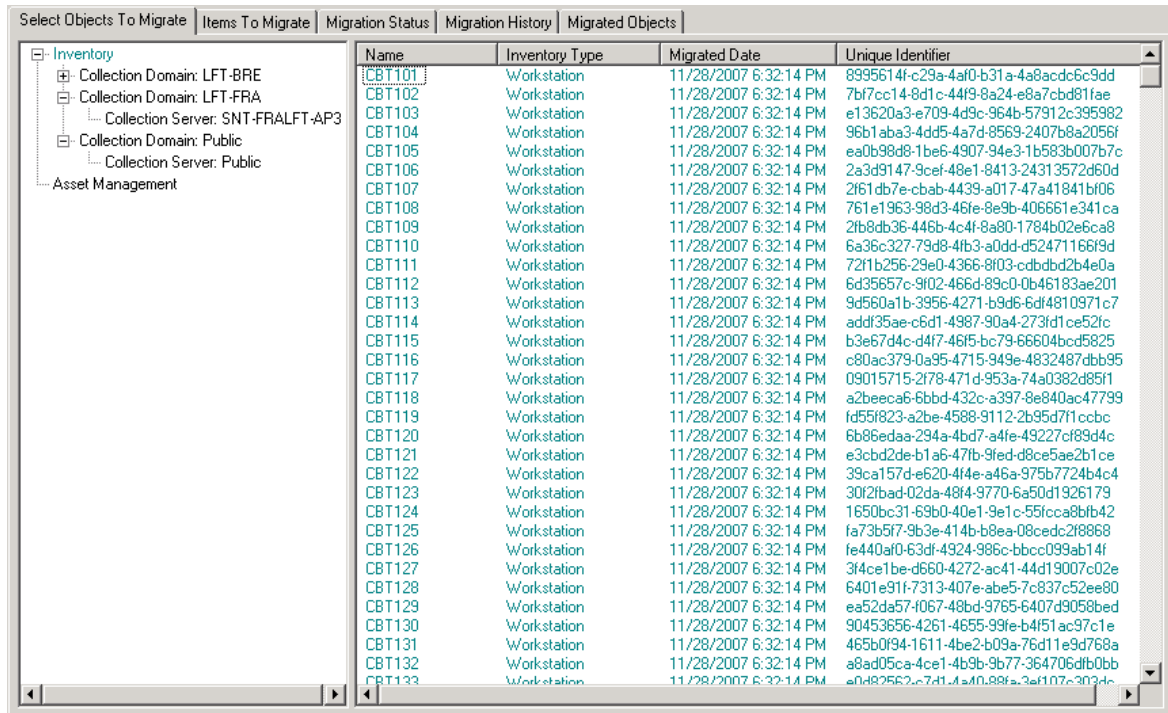
## 2.2 Select Objects to Migrate Tab

Click the *Select Objects To Migrate* tab to display the objects you can migrate. For information on migrating these objects, see [Section 1.6, “Migrating Objects,” on page 15](#).

- ♦ **Inventory:** Inventory data for the enterprise. Use these objects to migrate inventory data. For more information, see [Section 1.6.1, “Migrating Inventory Data,” on page 15](#).
- ♦ **Administrator-Defined Fields:** Custom fields defined in ZENworks Asset Management 7.5. (Asset management administrator-defined fields are known as *user*-defined fields in ZENworks Asset Management 7.5.) You can choose to migrate just the administrator-defined field definitions or the field definitions along with the data values. For more information, see [Section 1.6.2, “Migrating Administrator-Defined Field Definitions,” on page 17](#).
- ♦ **Local Products:** Software products created and identified to be tracked as part of your inventory. Only the definitions are migrated, not the inventory data. For more information, see [Section 1.6.3, “Migrating Local Product Definitions,” on page 18](#).
- ♦ **Asset Management:** Asset management data for the enterprise. Use these objects to migrate asset management data. For more information, see [Section 1.6.4, “Migrating Asset Management Data,” on page 19](#).
- ♦ **Custom Reports:** Inventory and asset management custom reports defined in ZENworks Asset Management 7.5. Use these objects to migrate custom reports. For more information, see [Section 1.6.7, “Migrating Custom Reports,” on page 22](#).
- ♦ **Deleted Workstations:** Workstations that are marked as deleted in ZENworks Asset Management 7.5. Use these objects to migrate the workstations that are marked as deleted. For more information, see [Section 1.6.1, “Migrating Inventory Data,” on page 15](#).

Click a collection server to display the workstations in that group in the panel on the right. Click *Deleted Workstations* to display the workstations that are marked as deleted in ZENworks Asset Management 7.5 in the panel on the right. The workstation Name, Inventory Type, Migrated Date, and Unique Identifier are displayed.

**Figure 2-3** Select Objects to Migrate



## 2.3 Items to Migrate Tab

The *Items to Migrate* tab shows the name, object type, and the unique identifier of each selected object. Right-click an object and select *Remove Item(s) from Migration Queue* to remove the object from the migration list.

## 2.4 Migration Status Tab

When you migrate an object, you are automatically taken to the *Migration Status* tab, which shows the progress and details of the migration.

## 2.5 Migration History Tab

The *Migration History* tab shows what objects have been migrated, along with the object type, status, and migration date. To see the detailed status of a specific migrated object, right-click the object and select *Detailed Status*. The *Migration Status* tab opens with details about the migration. To see a detailed list of migrated objects, right-click the object and select *Migrated Objects*. The *Migrated Objects* tab opens with a detailed list of migrated objects.

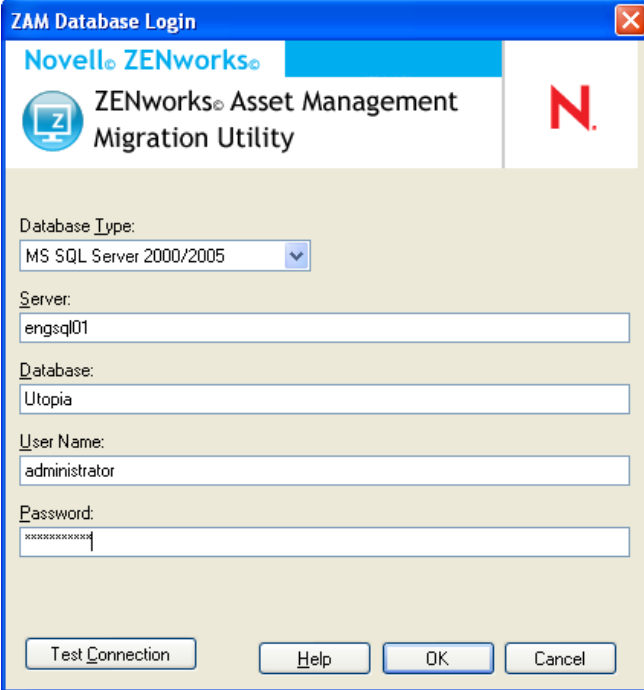
## 2.6 Migrated Objects Tab

The *Migrated Objects* tab shows the objects that have been successfully migrated, including the object type, migrated date, and the object's unique identifier.

## 2.7 Select ZAM Database Field

The *Select ZAM Database* field shows your source database, which is your ZENworks Asset Management 7.5 database. Click the button to the right of the Database Type field to open the *ZAM Database Login* dialog box, where you can log in to your source database. For Microsoft SQL migration, you see the following screen:

**Figure 2-4** ZAM Database Login for Microsoft SQL Server Migration



The screenshot shows a dialog box titled "ZAM Database Login" with a blue header bar. The header contains the Novell ZENworks logo and the text "ZENworks Asset Management Migration Utility" next to a red "N" logo. The main area is light beige and contains the following fields and buttons:

- Database Type:** A dropdown menu with "MS SQL Server 2000/2005" selected.
- Server:** A text input field containing "engsql01".
- Database:** A text input field containing "Utopia".
- User Name:** A text input field containing "administrator".
- Password:** A text input field with masked characters (asterisks).
- Buttons:** "Test Connection", "Help", "OK", and "Cancel" are located at the bottom.

**Database Type:** Specify the database type. For example, specify *MS SQL Server 2000/2005* for both external and embedded MS SQL Server databases.

**Server:** Specify either the DNS name or IP address of the server. Each time you use this dialog box, the last server you logged in to is displayed here..

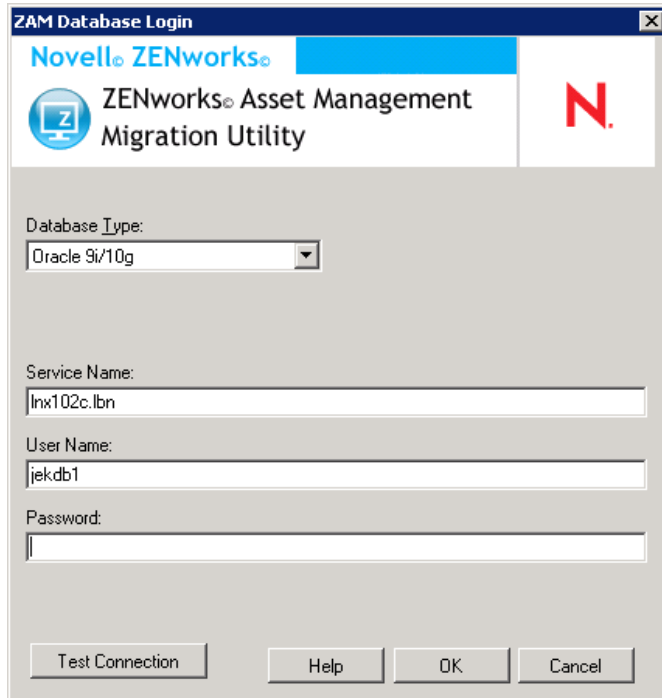
**Database:** Specify the database name. Each time you use this dialog box, the last database you logged in to is displayed here.

**User Name:** Specify the username. Each time you use this dialog box, the last username you used is displayed here.

**Password:** Specify the password. This must be specified every time to authenticate.

For Oracle migration, you see the following screen:

**Figure 2-5** ZAM Database Login



**Database Type:** Specify the database type. For example, specify *Oracle 9i/10g* for the latest Oracle database type.

**Service Name:** For Oracle migration, specify the service name. Each time you use this dialog box, the last service you logged in to is displayed here.

**User Name:** Specify the username. Each time you use this dialog box, the last username you used is displayed here.

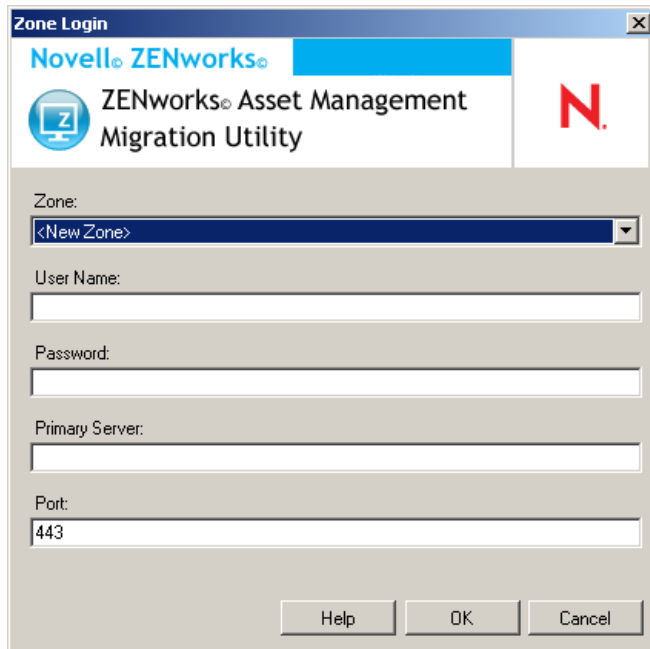
**Password:** Specify the password. This must be specified every time to authenticate.

## 2.8 Select Zone Field

The *Select Zone* field shows the migration destination, which is your Management Zone for ZENworks 11 SP2 Configuration Management. Click the button to the right of the field to open the *Zone Login* dialog box, where you can select the destination database.



**Figure 2-6** Zone Login



**Zone:** Specify your Management Zone. Each time you use this dialog box, the last zone that you logged in to is displayed here.

**User Name:** Specify the username for the zone. *Administrator* is normally used.

**Password:** Specify the password. This must be entered every time to authenticate.

**Primary Server:** Specify either its DNS name or IP address. This field is automatically populated when you select a Management Zone in the *Zone* field.

**Port:** The standard port for the ZENworks Primary Server is 443. If the server is using a different port, specify that port number.

## 2.9 Start Migration Button

After you select the objects you want to migrate, click *Start Migration* to begin the migration process.

## 2.10 Cancel Button

The *Cancel* button stops the migration process at the point when you click it. Objects that have already migrated when the *Cancel* button is clicked are not rolled back.

## 2.11 Migration Queue Progress

Located at the bottom of the console window, this indicator shows the progress of the migration queue.

## 2.12 Migration Task Progress

Located at the bottom of the console window, this indicator shows the progress of the migration task.

---

# A Migrating Both ZENworks 7 Desktop Management and ZENworks 7.5 Asset Management

To successfully migrate both ZENworks 7 Desktop Management and ZENworks 7.5 Asset Management to ZENworks 11 SP2, follow the migration order presented below. Doing so ensures the successful migration of each ZDM 7/ZAM 7.5 workstation into one ZENworks 11 SP2 managed device and retains all ZDM 7 assignments and ZAM 7.5 data associated with the workstation.

---

**IMPORTANT:** The ZENworks 11 SP2 Adaptive Agent and ZENworks 7 Desktop Management Agent can coexist on the same workstation if the only Adaptive Agent feature that is enabled is Asset Management. Enabling features related to other ZENworks 11 SP2 products (Configuration Management and Patch Management) on the same machine as ZENworks 7 Desktop Management is not supported.

---

- ♦ [Section A.1, “Migration Order,” on page 35](#)
- ♦ [Section A.2, “ZAM Migration Utility Messages,” on page 36](#)

## A.1 Migration Order

- 1 Upgrade ZENworks 7.5 Asset Management to the IR19 (or later) release.

You can use the [Novell Patch Finder \(http://download.novell.com/patch/finder/\)](http://download.novell.com/patch/finder/) to locate and download IR19.

- 2 In ZENworks 7.5 Asset Management, scan all ZDM 7/ZAM 7.5 workstations that you want to become ZENworks 11 SP2 managed devices. The scan adds the ZENworks 7 Desktop Management GUID (for each workstation) to the ZENworks 7.5 Asset Management inventory database.

Make sure that the scan cycle completes for all workstations you want to migrate. It might be necessary to run multiple scans to cover all workstations.

For information about running an inventory scan, see the [ZENworks 7.5 Asset Management Guide \(http://www.novell.com/documentation/zam75/pdfdoc/am75admin/asset\\_management\\_users\\_guide.pdf\)](http://www.novell.com/documentation/zam75/pdfdoc/am75admin/asset_management_users_guide.pdf)

- 3 Run the ZENworks 11 SP2 Asset Management migration utility to migrate the inventory data. The utility does the following:

- ♦ Creates the ZDM 7/ZAM 7.5 workstations as migrated devices in the ZENworks 11 SP2 database. The workstation's ZDM 7 GUID is used when creating the ZENworks 11 SP2 device object.
- ♦ Migrates the ZENworks 7.5 Asset Management inventory data (for each workstation) to the ZENworks 11 SP2 database.

For information about running the utility, see [Chapter 1, “Using the Migration Utility,” on page 7](#).

- 4 (Optional) Run the ZENworks 11 SP2 Asset Management migration utility to migrate the asset management data.

For information about running the utility, see [Chapter 1, “Using the Migration Utility,” on page 7](#).

- 5 Run the ZENworks 11 SP2 Configuration Management migration utility. The utility adds the existing ZENworks 7 Desktop Management objects and associations to the ZENworks 11 SP2 database.

When you run the ZENworks 11 SP2 Configuration Management migration utility, do not migrate the workstations. Because of the ZAM migration utility, the workstations already exist as devices in the ZENworks 11 SP2 database. Instead, migrate the objects (applications, images, policies, and so forth) and the associations.

For information about running the utility, see the [ZENworks 11 SP2 Configuration Management Migration Guide](#).

- 6 Uninstall the ZENworks 7 Desktop Management Agent from the ZDM 7/ZAM 7.5 workstations. This must be done before installing the ZENworks 11 SP2 Adaptive Agent.
- 7 Deploy the ZENworks 11 SP2 Adaptive Agent to the ZDM 7/ZAM 7.5 workstations.

The ZENworks 11 SP2 Adaptive Agent is registered in the ZENworks 11 SP2 database and linked to the correct migrated device object. The migrated device object is then changed to a managed device object that has the correct ZDM 7/ZAM 7.5 associations and data associated with it.

## A.2 ZAM Migration Utility Messages

The migration utility generates several messages associated with migration of ZENworks 7 Desktop Management and ZENworks 7.5 Asset Management. These messages are designed to help ensure a successful migration.

### **There are no ZENworks 7 Desktop Management GUIDs in the inventory data.**

**Explanation:** The migration utility did not find any ZDM 7 GUIDs for any of the ZAM 7.5 workstations selected for migration.

**Cause:** The workstations have not been scanned using ZENworks 7.5 Asset Management IR19 (or later). IR19 includes a modified inventory collector that reads the ZDM7 GUID from the workstation’s registry and adds it to the inventory data. This shared GUID enables the ZAM 7.5 inventory data and ZENworks 7 Desktop Management associations to be reconciled to the same ZENworks 11 SP2 managed device.

**Action:** Install IR19 and rescan the workstations (see [Step 2 on page 35](#) for details). If you don’t have ZDM 7, ignore the message.

### **There are devices in your ZENworks Asset Management inventory data that are already present in the ZENworks Configuration Management target database.**

**Explanation:** The migration utility found devices in the ZENworks 11 SP2 database that have the same GUID as the workstations being migrated from the ZENworks 7.5 Asset Management database.

**Cause:** The ZENworks 11 SP2 Configuration Management migration utility was run before the ZENworks 11 SP2 Asset Management migration utility and the ZDM 7 workstations were migrated to the ZENworks 11 SP2 database. Because the ZDM 7/ZAM 7.5 workstations share the same GUID, the ZAM migration utility can't add the workstations. You must use the ZAM migration utility, not the ZENworks 11 SP2 Configuration Management migration utility, to add the ZDM 7/ZAM 7.5 workstations to the ZENworks 11 SP2 database.

**Action:** Delete the existing duplicate devices from the ZENworks 11 SP2 database. Run the ZENworks 11 SP2 Asset Management migration utility (see [Step 3 on page 35](#)), then run the ZENworks 11 SP2 Configuration Management migration utility (see [Step 5 on page 36](#)). When you run the ZENworks 11 SP2 Configuration Management migration utility, do not migrate the workstations; the workstations already exist as devices in the ZENworks 11 SP2 database. Instead, migrate only the objects (applications, images, policies, and so forth) and the workstations' associations.

### **This ZENworks Asset Management device will not be migrated because it is already present in the ZENworks Configuration Management target database.**

**Explanation:** The migration utility found a device in the ZENworks 11 SP2 database that has the same GUID as the workstation being migrated from the ZENworks 7.5 Asset Management database.

**Cause:** The ZENworks 11 SP2 Configuration Management migration utility was run before the ZENworks 11 SP2 Asset Management migration utility and the ZDM 7 workstation was migrated to the ZENworks 11 SP2 database. Because the ZDM 7/ZAM 7.5 workstations share the same GUID, the ZAM migration utility can't add the workstation. You must use the ZAM migration utility, not the ZENworks 11 SP2 Configuration Management migration utility, to add the ZDM 7/ZAM 7.5 workstation to the ZENworks 11 SP2 database.

**Action:** Delete the existing duplicate device from the ZENworks 11 SP2 database. Run the ZENworks 11 SP2 Asset Management migration utility (see [Step 3 on page 35](#)), then run the ZENworks 11 SP2 Configuration Management migration utility (see [Step 5 on page 36](#)). When you run the ZENworks 11 SP2 Configuration Management migration utility, do not migrate the workstation; the workstation already exists as a device in the ZENworks 11 SP2 database. Instead, migrate only the objects (applications, images, policies, and so forth) and the workstation's associations.



---

# B ZENworks Objects and Their Uniqueness

During migration of asset management data, most of the asset management objects (e.g., Purchase Records, Licensed Products) are migrated without checking for duplicate objects in ZENworks 11 SP2 Asset Management. This can lead to the following outcomes if there are objects in ZENworks 11 SP2 Asset Management that match objects being migrated from ZENworks Asset Management 7.5 (see [Section B.1, “Duplicate Object Details,”](#) on page 39 for what constitutes a duplicate of each object type):

- ♦ If the migration process is restarted due to errors, the ZENworks Asset Management 7.5 data has already been partially migrated. Because of the partially migrated data, the already migrated objects are rejected and the migration utility reports duplicate key violations.
- ♦ If you are migrating to ZENworks 11 SP2 Asset Management you can fix the duplicates and then restart the migration utility, making sure to turn off the *Stop Migration on First Error* setting. However, restarting migration might result in loss of data. If this possibility is not acceptable, we recommend that you restore the ZENworks Asset Management 7.5 and ZENworks 11 SP2 Asset Management database backups, resolve the duplicates, then run the migration utility again.
- ♦ If the objects are duplicates and the ZENworks 11 SP2 Asset Management version of the object is not in a subfolder, the migration utility produces an error. Some or all of the duplicate objects that the migration utility was processing (e.g., licenses) are not moved to ZENworks 11 SP2 Asset Management.
- ♦ If the objects are duplicates but the ZENworks 11 SP2 Asset Management version of the object is in a subfolder, the migration utility adds the object to ZENworks 11 SP2 Asset Management. You end up with two objects in ZENworks 11 SP2 with matching names, but in different folders. The exception to this is Contracts, which does not allow duplicate Contract ID's in ZENworks 11 SP2 Asset Management, even in subfolders.

## B.1 Duplicate Object Details

- ♦ [Section B.1.1, “Purchase Records,”](#) on page 40
- ♦ [Section B.1.2, “Catalog Products,”](#) on page 40
- ♦ [Section B.1.3, “Licensed Products,”](#) on page 40
- ♦ [Section B.1.4, “Discovered Products,”](#) on page 40
- ♦ [Section B.1.5, “Software Collections,”](#) on page 40
- ♦ [Section B.1.6, “Contracts,”](#) on page 40
- ♦ [Section B.1.7, “Date Notifications,”](#) on page 40
- ♦ [Section B.1.8, “Documents,”](#) on page 41

## **B.1.1 Purchase Records**

A ZENworks Asset Management 7.5 Unique Record is a combination of PO Number + Order Date. During migration, the PO number is used unless it is empty; in that case, the Order Date is used as part of a newly created PO number.

## **B.1.2 Catalog Products**

A ZENworks Asset Management 7.5 Unique Record is a combination of Manufacturer + Product + Product Type + Version + Licenses Per Package.

## **B.1.3 Licensed Products**

A ZENworks Asset Management 7.5 Unique Record is a combination of Manufacturer + Product + Version information. If a License is not a duplicate, but has an associated catalog product that is also associated with an existing License in ZENworks 11 SP2, the migration utility produces an error because the database does not allow the same catalog product to be associated with multiple licenses.

If a License is not a duplicate, but has a discovered product that is also associated with an existing License in ZENworks 11 SP2 Asset Management, the migration will continue. Consumption numbers for the two licenses will not be accurate because the discovered product is counted as installations for both licenses. You should remove the discovered product from one of the licenses in ZENworks 11 SP2 Asset Management.

## **B.1.4 Discovered Products**

The migration utility will only migrate local products. It does not migrate duplicates.

## **B.1.5 Software Collections**

A ZENworks Asset Management 7.5 Unique Record is a combination of Manufacturer + Product + Version information. In ZENworks Asset Management 7.5, if you enter duplicate values for a collection, ZENworks Asset Management increments the Product value.

If non-duplicate collections are defined in ZENworks Asset Management 7.5 and ZENworks 11 SP2 Asset Management that require the same Member Product(s), the migration utility transfers this data to ZENworks 11 SP2. This action causes both collections to count installations against the same product(s), so you should fix this in ZENworks 11 SP2 Configuration Management.

## **B.1.6 Contracts**

A ZENworks Asset Management 7.5 Unique Record is the Contract ID. Unlike other Asset Management objects, ZENworks 11 SP2 Asset Management will not allow you to create Contracts in multiple folders with the same Contract ID. Contracts in ZENworks Asset Management 7.5 that match a Contract ID in ZENworks 11 SP2 Asset Management are not migrated.

## **B.1.7 Date Notifications**

A ZENworks Asset Management 7.5 Unique Record is a randomly generated identifier. ZENworks Asset Management 7.5 allows Notifications to have duplicate values in all columns. ZENworks 11 SP2 Asset Management enforces a unique Notification name in each folder. If you have Notifications in ZENworks Asset Management 7.5 with duplicate Notification names, the migration fails.



## **B.1.8 Documents**

ZENworks Asset Management 7.5 Unique Record is a randomly generated identifier. ZENworks Asset Management 7.5 allows Documents to have duplicate values in all columns. ZENworks 11 SP2 Asset Management enforces a unique Document ID name in each folder. If you have Documents in ZENworks Asset Management 7.5 with duplicate Document IDs, the migration fails.



# Glossary

**administrator-defined field.** For asset inventory, a field that allows you to create custom user, workstation, component, or product fields. For asset management, you can create contract or licensed product fields. In ZENworks Asset Management 7.5, administrator-defined fields are known as *user-defined* fields.

**asset management data.** Data that includes the following:

- Asset management usage data
- Asset management custom reports
- Asset management administrator-defined fields
- Catalog products
- Discovered products
- Purchase records
- Licensed products
- Software collections
- Contracts and date notifications
- Documents

**collection domain.** Used in ZENworks Asset Management 7.5 to organize your enterprise into logical groups.

**collection server.** Software that resides on a specific machine and is responsible for collecting inventory data from a selected group of workstations and loading it into a central inventory database.

**custom report.** An asset management or inventory report that can be tailored to a specific function.

**deleted workstation.** A device that has been marked for deletion in ZENworks Asset Management 7.5. A device marked for deletion stays in the database with all its attributes, history, and components until it is purged. When it is purged, it is removed from the inventory database along with all of its associated data.

**device.** In ZENworks 10 Asset Management, a device is a workstation or server; in ZENworks Asset Management 7.5, a device is a network-discovered device.

**inventory data.** Data that includes the following:

- Devices
- Device history
- Local software products
- Hardware and software components
- Administrator-defined fields
- Custom reports

**local product.** A product that has been defined so that it can be identified in an inventory scan.

**usage data.** Data related to inventory, including hardware components, software components, user name, hours used, and so on.

**user-defined field.** See “[administrator-defined field](#)” on page 43. In ZENworks Asset Management 7.5, asset management administrator-defined fields are known as *user-defined* fields.

