

Restricting Dashboard Access

ZENworks® Mobile Management 3.2.x

December 2020

Novell.



Legal Notices

Novell, Inc., makes no representations or warranties with respect to the contents or use of this documentation, and specifically disclaims any express or implied warranties of merchantability or fitness for any particular purpose. Further, Novell, Inc., reserves the right to revise this publication and to make changes to its content, at any time, without obligation to notify any person or entity of such revisions or changes.

Further, Novell, Inc., makes no representations or warranties with respect to any software, and specifically disclaims any express or implied warranties of merchantability or fitness for any particular purpose. Further, Novell, Inc., reserves the right to make changes to any and all parts of Novell software, at any time, without any obligation to notify any person or entity of such changes.

Any products or technical information provided under this Agreement may be subject to U.S. export controls and the trade laws of other countries. You agree to comply with all export control regulations and to obtain any required licenses or classification to export, re-export or import deliverables. You agree not to export or re-export to entities on the current U.S. export exclusion lists or to any embargoed or terrorist countries as specified in the U.S. export laws. You agree to not use deliverables for prohibited nuclear, missile, or chemical biological weaponry end uses. See the [Novell International Trade Services Web page \(http://www.novell.com/info/exports/\)](http://www.novell.com/info/exports/) for more information on exporting Novell software. Novell assumes no responsibility for your failure to obtain any necessary export approvals.

Copyright © 2012-20 Novell, Inc. All rights reserved. No part of this publication may be reproduced, photocopied, stored on a retrieval system, or transmitted without the express written consent of the publisher.

Novell, Inc.
1800 South Novell Place
Provo, UT 84606
U.S.A.
www.novell.com

Online Documentation: To access the latest online documentation for this and other Novell products, see the [Novell Documentation Web page \(http://www.novell.com/documentation/\)](http://www.novell.com/documentation/).

Novell Trademarks

For Novell trademarks, see [the Novell Trademark and Service Mark list \(http://www.novell.com/company/legal/trademarks/tmlist.html\)](http://www.novell.com/company/legal/trademarks/tmlist.html).

Third-Party Materials

All third-party trademarks are the property of their respective owners.

Table of Contents

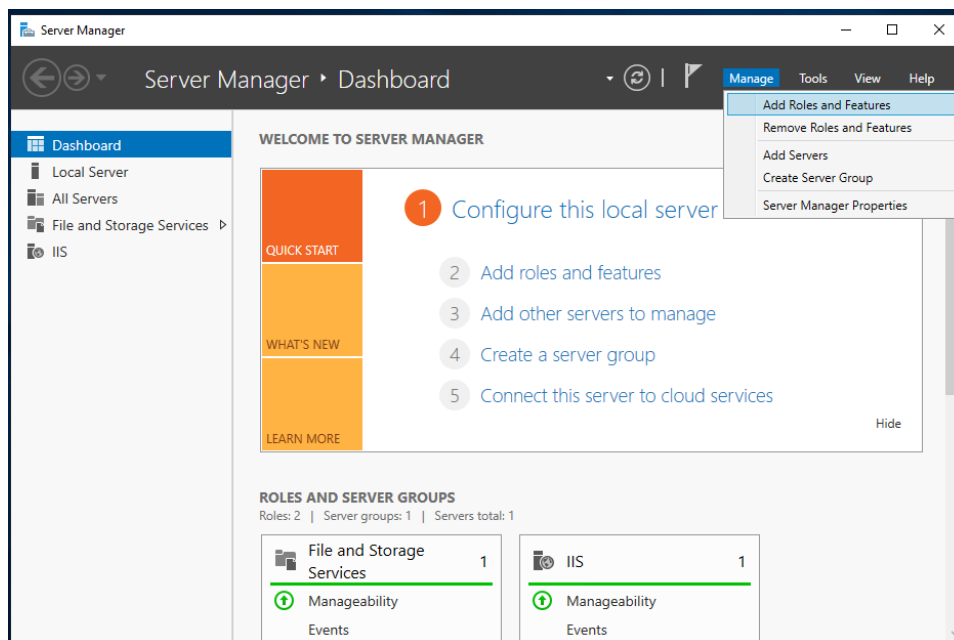
Adding an IP and Domain Restrictions Server Role.....	4
Allow or Restrict Access to the Dashboard IIS/Virtual Directory	8

Adding an IP and Domain Restrictions Server Role

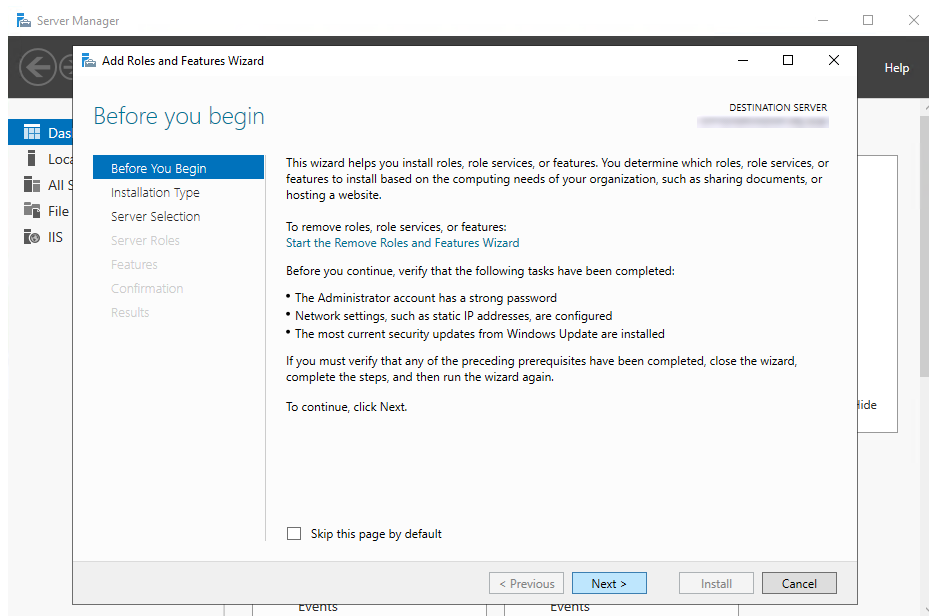
These instructions can be used to allow administrators the ability to limit access to the ZENworks Mobile Management dashboard to only those IP or IP ranges that are necessary for the administration of ZENworks Mobile Management. This will allow admins the ability to minimize the exposure to any content contained within the dashboard.

***Note:** if the IP and Domain Restrictions server role has already been added, skip to the next section ([here](#))

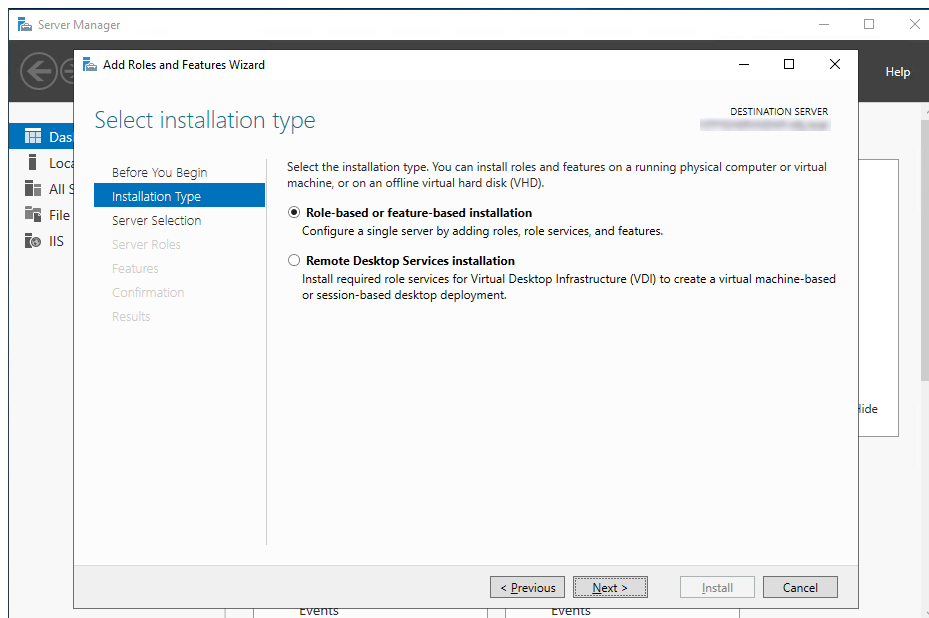
1. Open Server manager and access the Add Roles and Features option (**Manage > Access Roles and Features**).



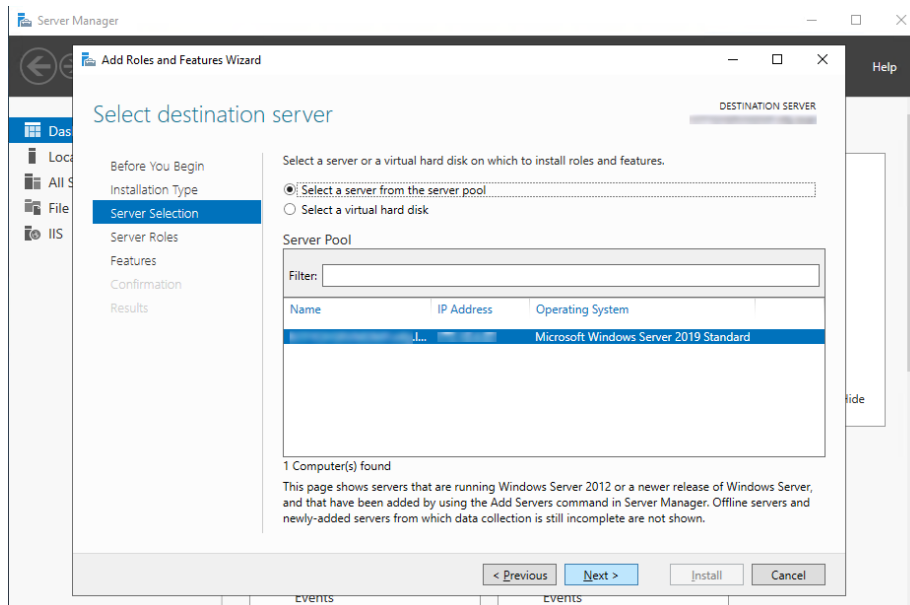
2. On the *Before you begin* screen, tap **Next**.



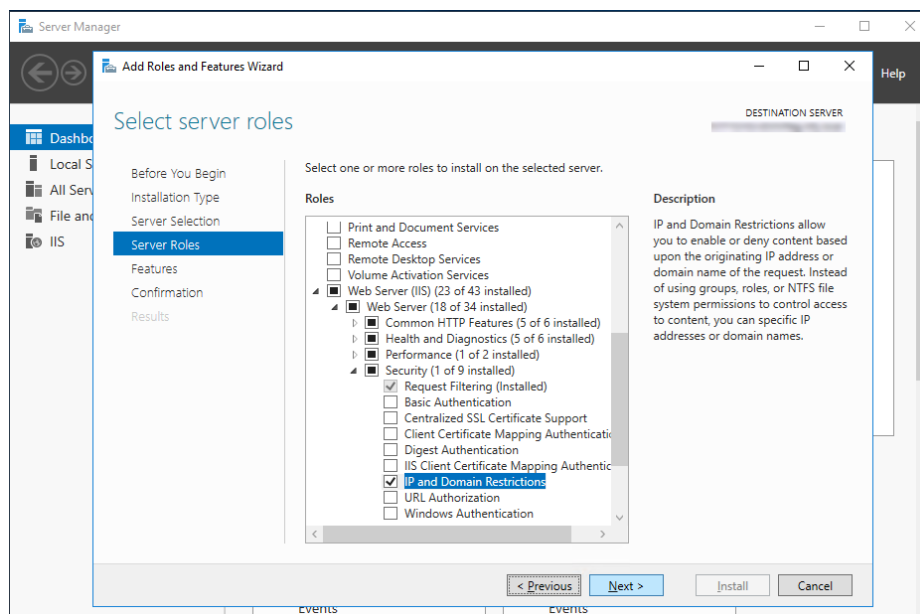
3. On the *Select installation type* screen, select **Role-based or feature-based installation**, and click **Next**.



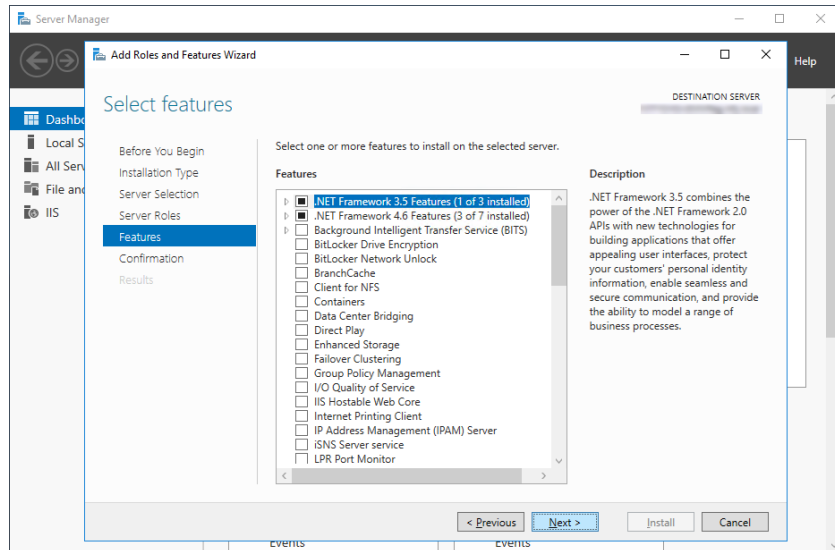
- On the *Select destination server* screen, please select the server hosting the ZENworks Mobile Management Server Web/HTTP component. If you are on the ZENworks Mobile Management Server Web/HTTP component, that should be the highlighted server. Please double check before proceeding. Highlight the ZENworks Mobile Management Server Web/HTTP component and click **Next**.



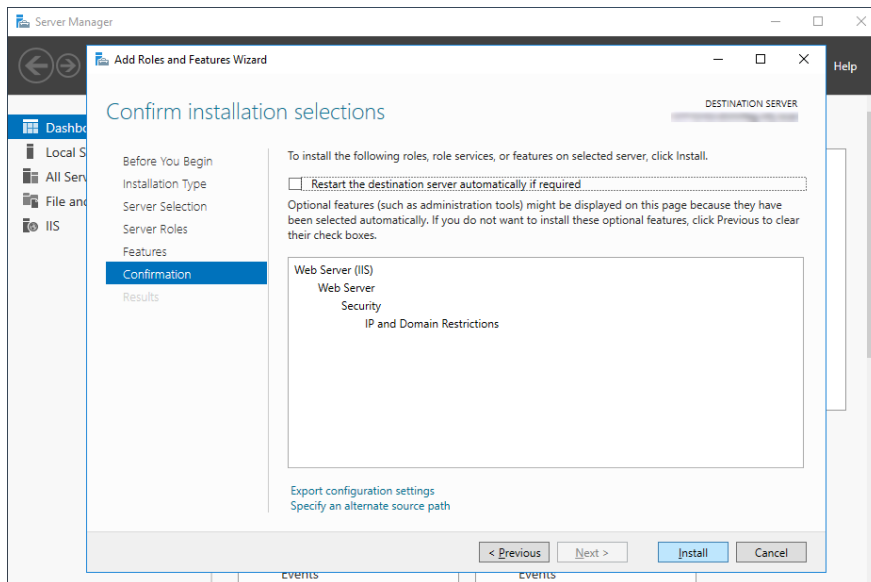
- On the *Server Select roles* screen, navigate to **IP and Domain Restrictions** (expand **Web Server (IIS)** > expand **Web Server** > expand **Security**). Now, checkmark the box to the left of **IP and Domain Restrictions** and click **Next**.



6. No changes should be needed on *Select features* screen, just click **Next**.



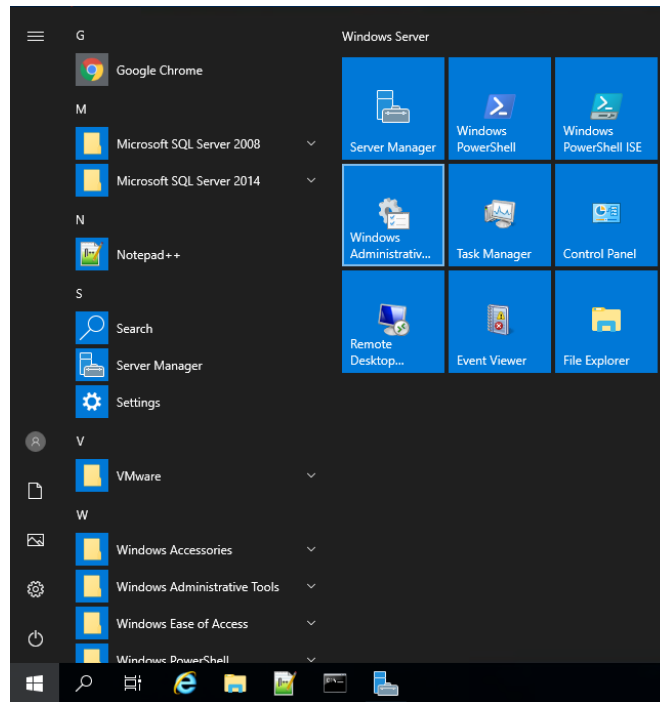
7. On the *Confirm installation selections* screen, verify that only the **IP and Domain Restrictions** server roles are being installed and then click **Install**.



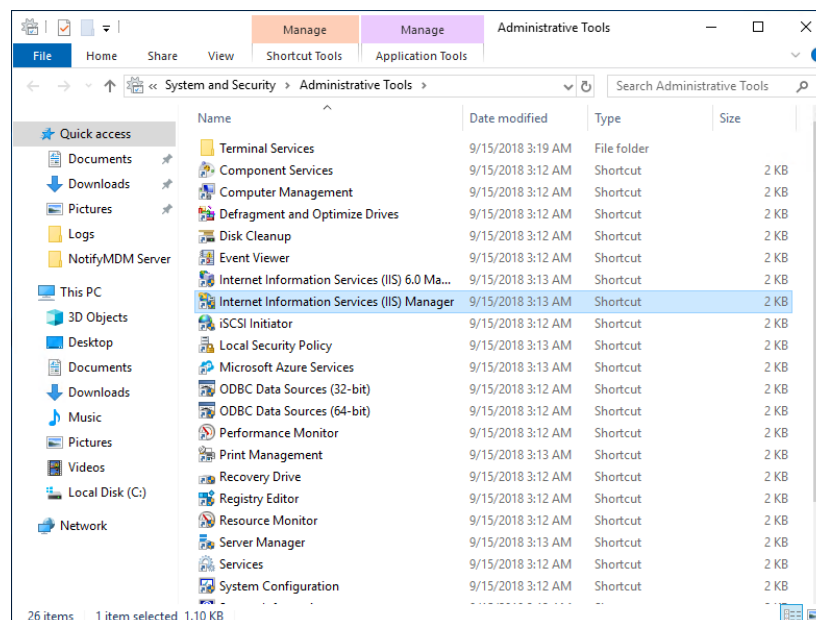
Once the **IP and Domain Restrictions** server role has been added/installed, the ZENworks Mobile Management dashboard can have IP addresses either whitelisted or blacklisted within Internet Information Services (IIS).

Allow or Restrict Access to the Dashboard IIS/Virtual Directory

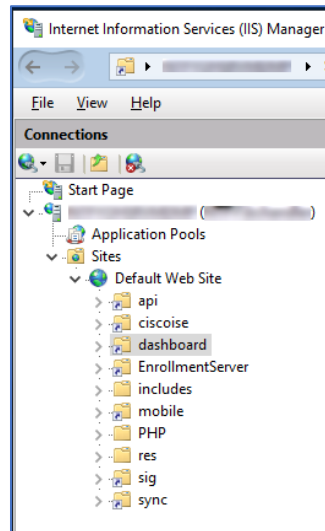
1. Open the Windows Administrative Tools (**Start Menu > Windows Administrative Tools**)



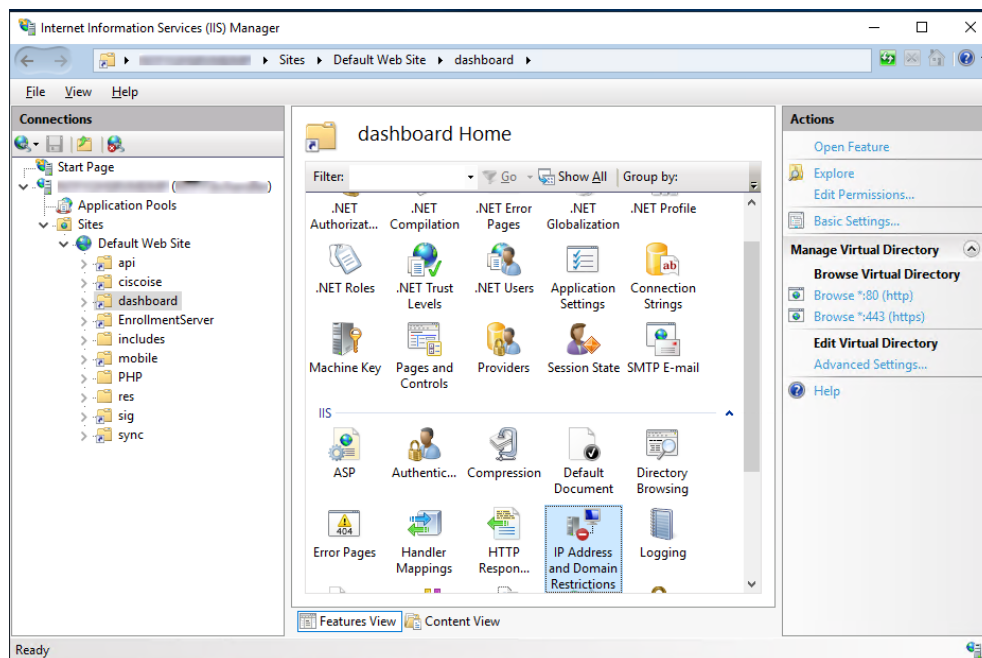
2. Locate and double-click on **Internet Information Services (IIS) Manger**



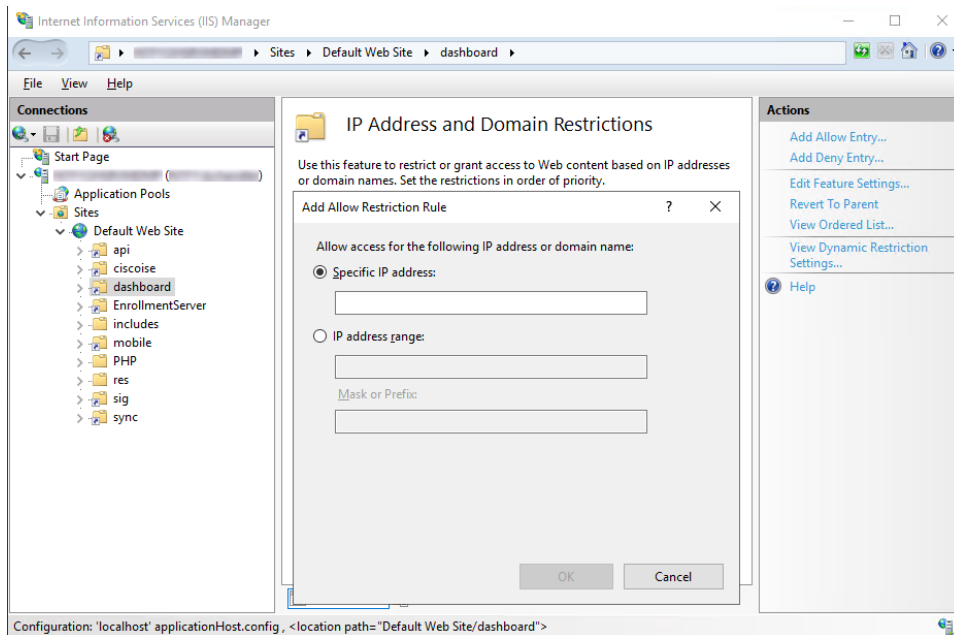
- Expand the server name listed. Now, expand the **Sites** folder. Please locate the ZENworks Mobile Management web site folder (by default installation, it will be labeled Default Web Site). Please expand that web site folder and click on the **dashboard** folder.



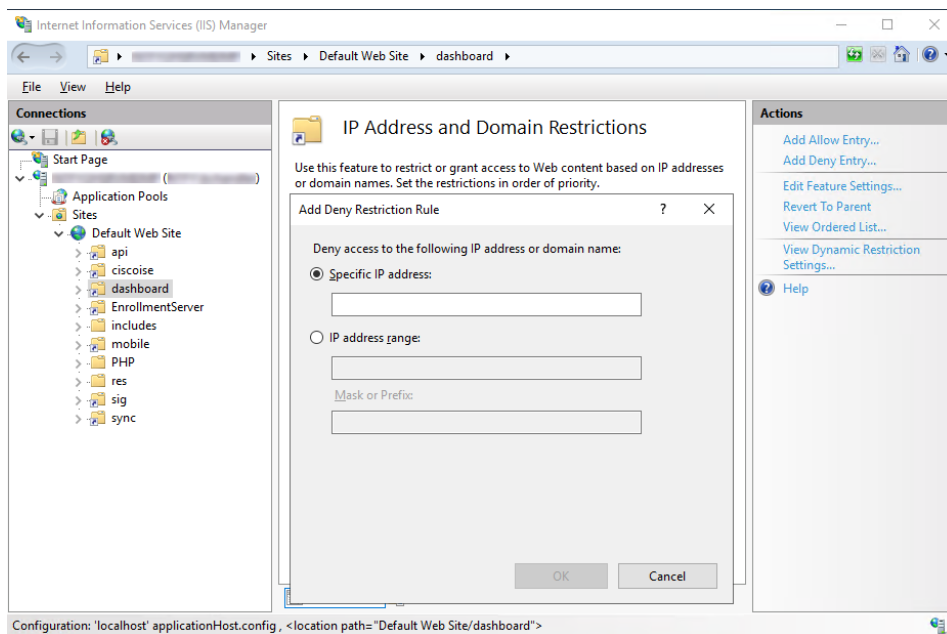
- Within the dashboard Home area (center window), scroll to the **IIS section** and double-click on **IP and Domain Restrictions**



- You can whitelist IP addresses (Add Allow Restriction Rule) or blacklisting IP addresses (Add Deny Restriction Rule) for access to the dashboard.
- Add Allow Restriction Rule (**Actions > Add Allow Entry**)



- Add Deny Restriction Rule (**Actions > Add Deny Entry**)



- Click **OK** when finished. Both Add Allow Restriction Rule and Add Deny Restriction Rule allow a specific IP address, a range of IP addresses.