

System Performance: Sizing and Tuning

ZENworks® Mobile Management 3.2.x

September 2015

Novell.



Legal Notices

Novell, Inc., makes no representations or warranties with respect to the contents or use of this documentation, and specifically disclaims any express or implied warranties of merchantability or fitness for any particular purpose. Further, Novell, Inc., reserves the right to revise this publication and to make changes to its content, at any time, without obligation to notify any person or entity of such revisions or changes.

Further, Novell, Inc., makes no representations or warranties with respect to any software, and specifically disclaims any express or implied warranties of merchantability or fitness for any particular purpose. Further, Novell, Inc., reserves the right to make changes to any and all parts of Novell software, at any time, without any obligation to notify any person or entity of such changes.

Any products or technical information provided under this Agreement may be subject to U.S. export controls and the trade laws of other countries. You agree to comply with all export control regulations and to obtain any required licenses or classification to export, re-export or import deliverables. You agree not to export or re-export to entities on the current U.S. export exclusion lists or to any embargoed or terrorist countries as specified in the U.S. export laws. You agree to not use deliverables for prohibited nuclear, missile, or chemical biological weaponry end uses. See the [Novell International Trade Services Web page \(http://www.novell.com/info/exports/\)](http://www.novell.com/info/exports/) for more information on exporting Novell software. Novell assumes no responsibility for your failure to obtain any necessary export approvals.

Copyright © 2012-15 Novell, Inc. All rights reserved. No part of this publication may be reproduced, photocopied, stored on a retrieval system, or transmitted without the express written consent of the publisher.

Novell, Inc.
1800 South Novell Place
Provo, UT 84606
U.S.A.
www.novell.com

Online Documentation: To access the latest online documentation for this and other Novell products, see the [Novell Documentation Web page \(http://www.novell.com/documentation/\)](http://www.novell.com/documentation/).

Novell Trademarks

For Novell trademarks, see [the Novell Trademark and Service Mark list \(http://www.novell.com/company/legal/trademarks/tmlist.html\)](http://www.novell.com/company/legal/trademarks/tmlist.html).

Third-Party Materials

All third-party trademarks are the property of their respective owners.

Table of Contents

Sizing for Best Performance	4
Tuning ZENworks Mobile Management	6
Setting Up a Web Garden	8
Setting Up a Web Garden in IIS 7 or 8	9
Hardware Requirements for Scaling ZENworks Mobile Management	11
100K Devices	11
200K Devices	13

Sizing for Best Performance

Architecture

The *ZENworks Mobile Management* system is comprised of an SQL Database component and a Web/HTTP component. Both components can be installed on a single server.

The system may also be configured with multiple web servers for a Network Load Balanced setup. With this configuration, you can install the SQL component and first instance of the web component on a single machine and install the second instance of the web component on a second machine. Machines where SQL is not installed will be able to support more devices than recommended below. These web servers can support approximately 2,000 users per 3 GB RAM.

A note about firewalls or host providers: Device traffic is routed through the *ZENworks Mobile Management* server. Because of this, the IP address of any server that sits between the *ZENworks Mobile Management* server and the ActiveSync Server (or LDAP server) will appear to have an increased amount of traffic. Some firewalls or hosts providers view increased traffic as an attempted attack and may limit or throttle connections. As a result, devices can experience sporadic connections with the ActiveSync, LDAP or *ZENworks Mobile Management* server.

Minimum System Requirements

CPU	RAM	Hard Drive	Maximum Devices
Dual Core 1.60 GHz CPU	4 GB RAM (SQL restricted to 300 MB)	80 GB HD	1000 Devices

This environment can be setup on supported MS SQL Express versions with proper database maintenance.

Performance Requirements

Maximum Devices	CPU	RAM	Hard Drive
4,000 Devices	Quad Core 2.13 GHz	8 GB RAM (SQL restricted to 750 MB)	80 GB HD
8,000 Devices	Quad Core 2.13 GHz	16 GB RAM (SQL restricted to 750 MB)	120 GB HD
20,000 Devices	Dual Quad Core 2.40 GHz w/ Hyper Threading Enabled (16 Logical Cores)	32 GB RAM (SQL restricted to 1.5 GB)	160 GB HD
40,000 Devices	Dual Hex Core 2.40 GHz w/ Hyper Threading Enabled (24 Logical Cores)	64 GB RAM (SQL restricted to 3 GB)	320 GB HD

** This environment can be setup on supported MS SQL Express versions with proper database maintenance.*

Usage Parameters

These system requirements are based on the usage parameters used in the test setting, which are listed below:

All devices are in Direct Push mode, set with a Direct Push Interval of 30 minutes.
Location data is reported based on the 30 minute interval, as well.

Email usage is as follows:

15% of the devices receive 12 emails/hour	25% of the emails are 500K
50% of the devices receive 8 emails/hour	50% of the emails are 75K
30% of the devices receive 4 emails/hour	25% of the emails are 10K
5% of the devices receive no email	

Test environments are configured with a 50/50 split between iOS & Android devices. All iOS devices have server side APNs enabled while all Android devices have server side GCM enabled.

Disabling APNs and/or GCM will result in an overall performance reduction of the ZENworks Mobile Management system.

Tuning ZENworks Mobile Management

PoolThreadLimit Registry Key

Adjust the PoolThreadLimit registry key on systems with more than 125 devices.

The value of this registry key should be configured to 2 times the total number of devices. For example, if there are 2000 devices on the system, you should adjust this setting to 4000.

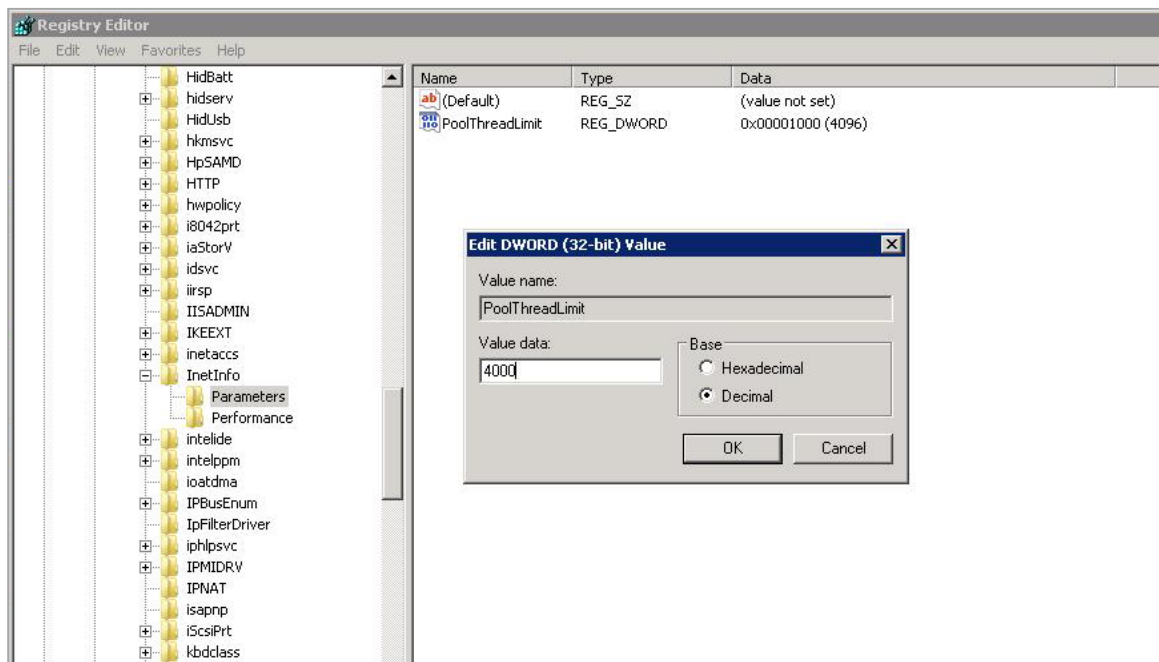
If the system is configured with multiple Web servers for a Network Load Balanced setup, you should adjust this setting on every server where a *ZENworks Mobile Management* component is installed. The value should be the same on every server.

1. Navigate through the *ZENworks Mobile Management* registry to adjust the setting:

HKEY_LOCAL_MACHINE\SYSTEM\CurrentControlSet\Services\InetInfo\Parameters

2. If the PoolThreadLimit key already exists, double click on it and adjust the value to 2 times the total number of devices.

Add the PoolThreadLimit registry key if it does not exist by right clicking on **Parameters** and selecting **New > DWORD**. Rename the newly created key, then double click on it to adjust the value to 2 times the total number of devices.



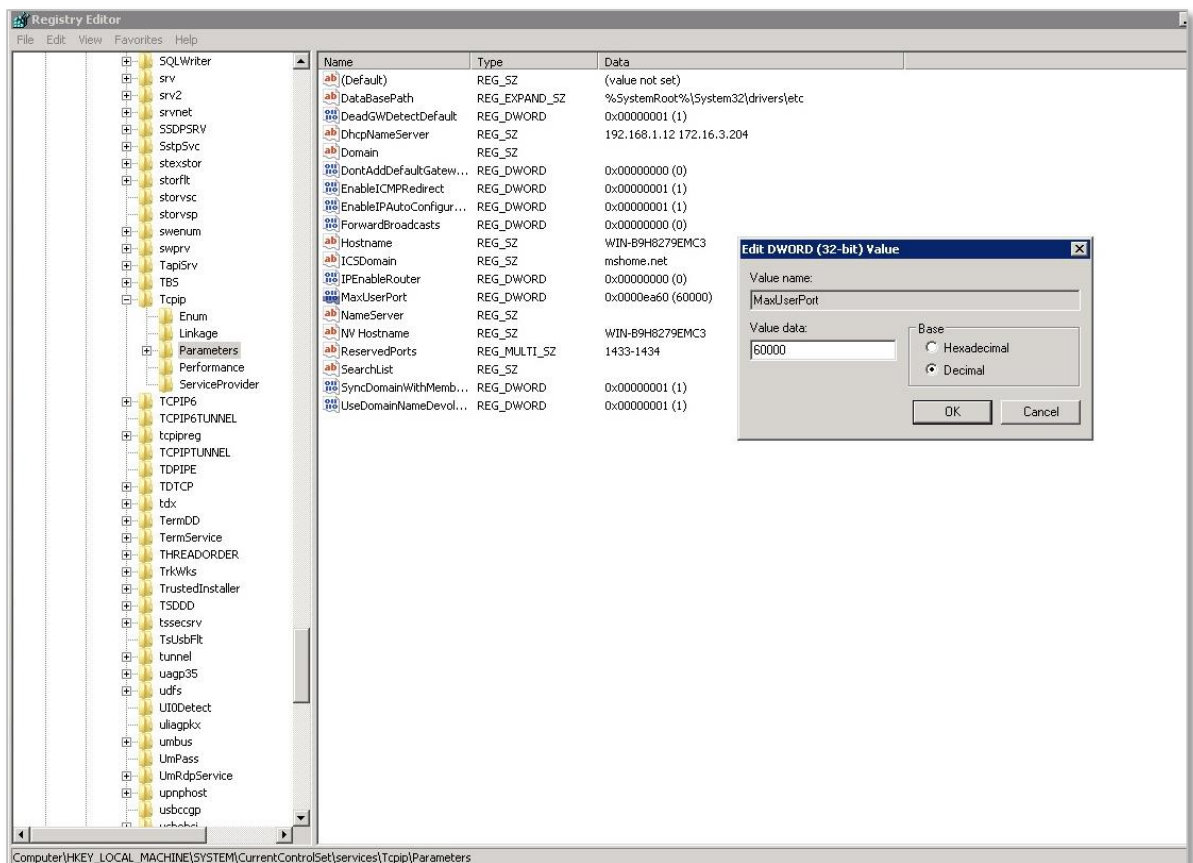
MaxUserPort Registry Key

Due to a default Windows setting allowing a maximum of 5000 concurrent open ports, it is a good idea to adjust the MaxUserPort registry key on systems with more than 1000 devices. The value of this registry key should be set to 5 times the total number of devices on the system. For example, if there are 2,000 devices on the system, adjust this key to 10,000.

If the system is configured with multiple web servers for a Network Load Balanced setup, you should adjust this setting on every server where a *ZENworks Mobile Management* component is installed. The value should be the same on every server.

1. Navigate to the following location in the registry:
HKEY_LOCAL_MACHINE\SYSTEM\CurrentControlSet\services\Tcpip\Parameters
2. If the MaxUserPort key already exists, double click on it and adjust the value to 5 times the total number of devices.

Add the MaxUserPort registry key if it does not exist by right clicking on **Parameters** and selecting **New > DWORD**. Rename the newly created key, then double click on it to adjust the value to 5 times the total number of devices.



Setting Up a Web Garden

Configuring a Web Garden for the ZENworks Mobile Management Web Server

A Web Garden is a server configuration where multiple processes run on a single Web server. This is accomplished by activating the Web Garden feature in Microsoft Internet Information Services (IIS), version 7 or 8. By default, an application pool in IIS runs in a single process on the server; however, there is an option to increase the *Maximum Worker Processes* to a value greater than 1. The result is that the server runs multiple processes, thus improving system performance.

If you have configured your system with multiple Web servers for a Network Load Balanced setup, the Web Garden feature (***Maximum Worker Processes***) should be adjusted on all servers running the *ZENworks Mobile Management* Web/Http component.

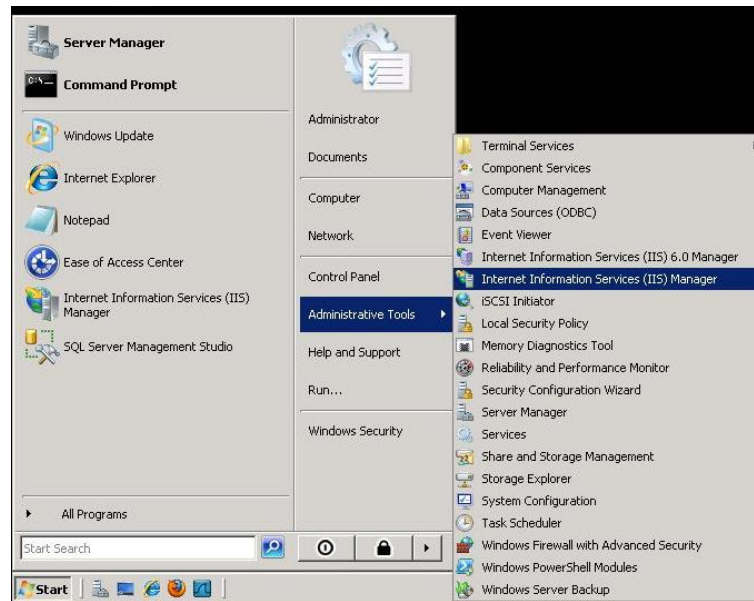
Recommendations

- 1-2 Worker Processes per CPU core.
 - 4 CPU cores – Increase *Worker Processes* to 4-8
 - 8 CPU cores – Increase *Worker Processes* to 8-16
 - 16 CPU cores – Increase *Worker Processes* to 16-32
- Increasing the number of *Worker Processes* beyond 2 per CPU core could result in a reduction in performance.

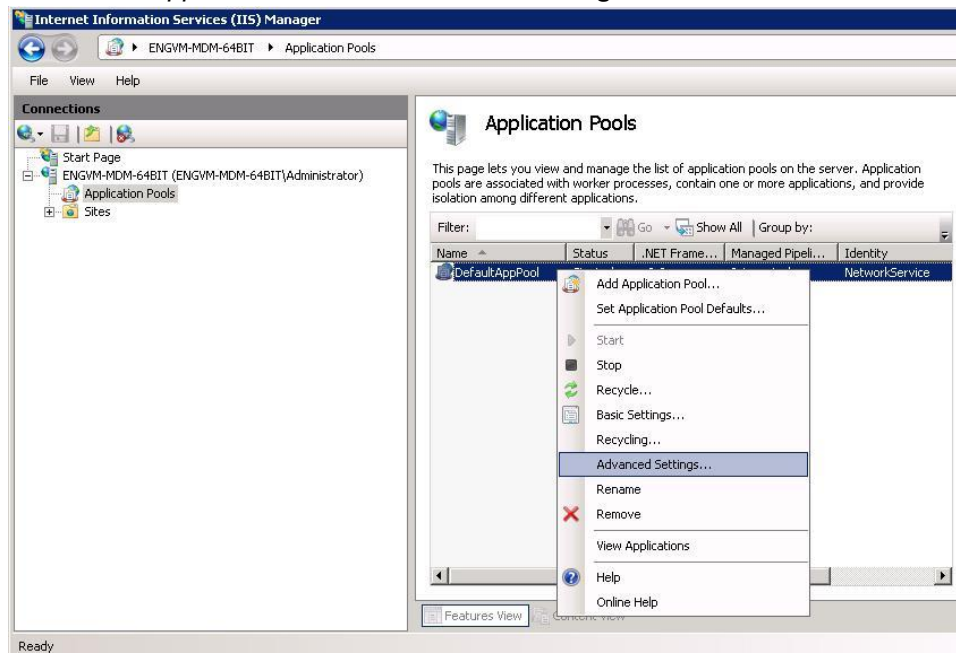
Instructions follow for setting up a Web Garden with IIS 7 or IIS 8.

Setting Up a Web Garden in IIS 7 or 8

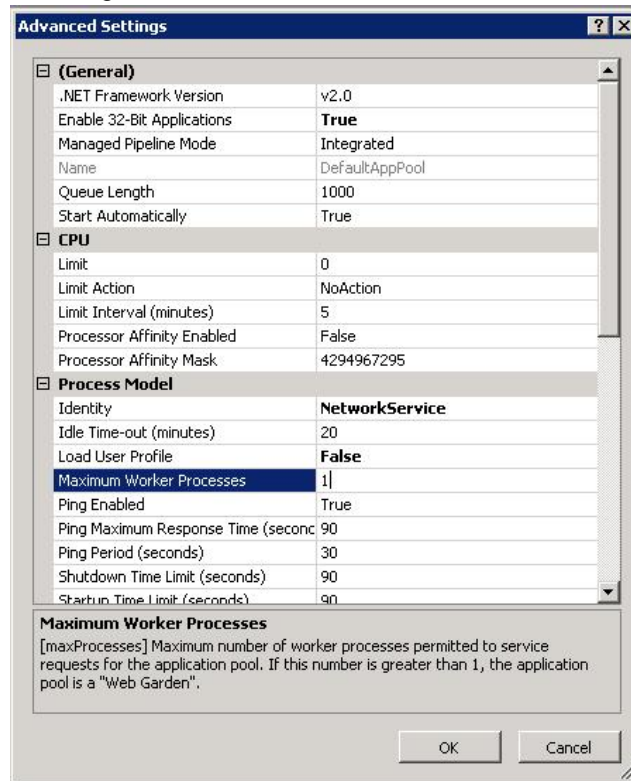
1. Open **Internet Information Services Manager**, located under **Administrative Tools**.



2. In the left menu, expand the server and select **Application Pools**.
3. In the **Application Pools** section, select **DefaultAppPool**.
4. Right-click **DefaultAppPool** and select **Advanced Settings** from the menu.



5. Under the **Process Model** section, adjust the **Maximum Worker Processes** to a value greater than 1, (see the recommendations listed earlier in this section). The value should remain at 1 for a non-Web garden setup or on single core machines.



Hardware Requirements for Scaling ZENworks Mobile Management

100K Devices

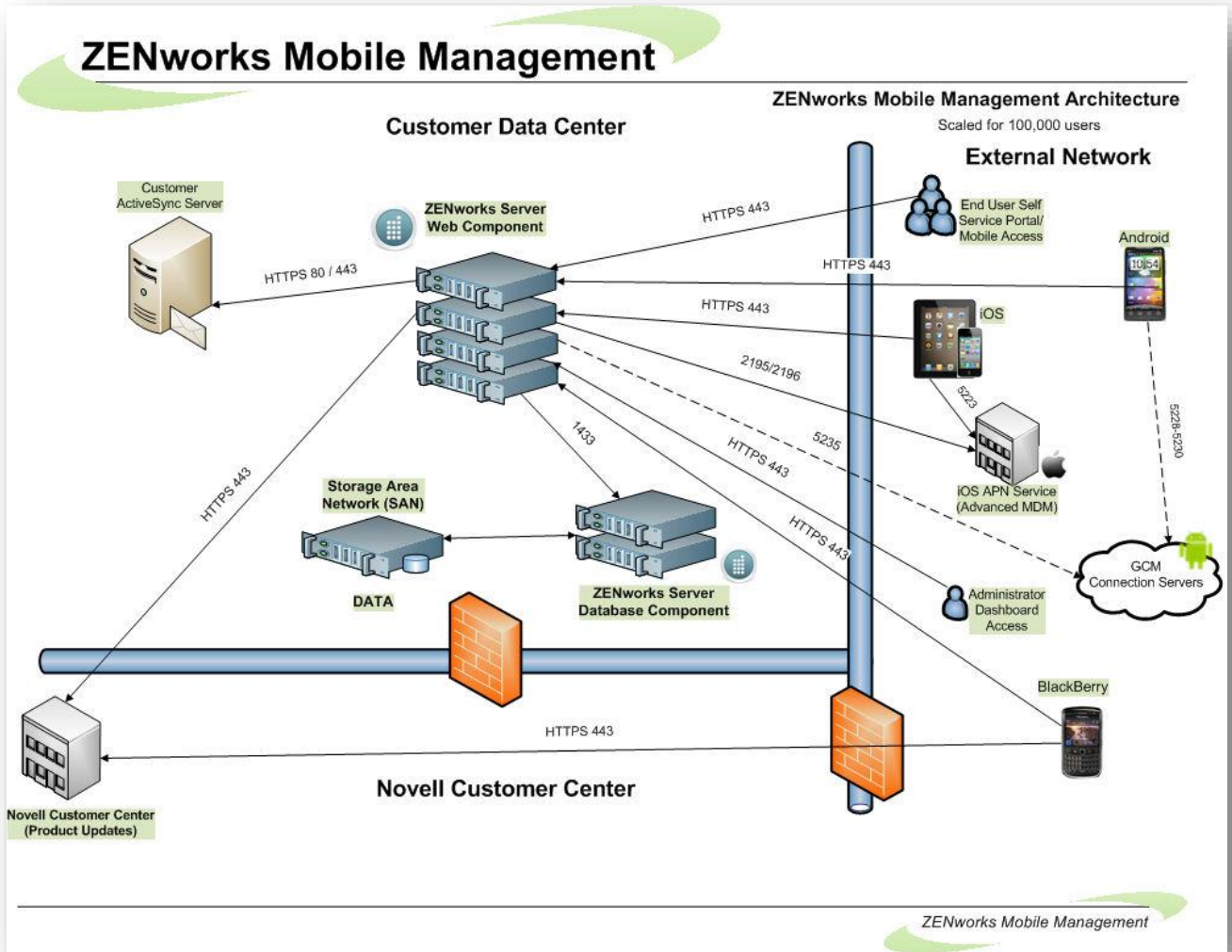
Web Component

- 4 physical servers set up as a Web Cluster, each consisting of:
 - Windows 2008 Enterprise Server R2 SP1 (64-bit version)
 - 48 GB RAM
 - 2 –eight-core CPUs with hyper-threading enabled
 - 150 GB HDD space (recommended mirrored configuration)
 - 32 worker processes

Database Component

- Use a dedicated SAN
 - Dual Head (High Availability)
 - 5 – 250 GB SAS Drives
 - 4 set up in a RAID 5 configuration
 - 1 set up as a hot spare
- 2 physical host servers connecting to the SAN, each consisting of:
 - 2 – Hex-core processors with hyper-threading enabled
 - 16 GB of RAM per server (10 GB allocated to SQL)
 - Windows 2008 Enterprise Server R2 SP1 (64 bit version)
 - SQL Server 2008 R2 Advanced / Enterprise
 - Using SAN as shared storage

100K Devices



200K Devices

Web Component

- 6 physical servers set up as a Web Cluster, each consisting of:
 - Windows 2008 Enterprise Server R2 SP1 (64-bit version)
 - 60 GB RAM
 - 2 –Eight-core CPUs with hyper-threading enabled
 - 150 GB HDD space (recommended mirrored configuration)
 - 32 worker processes

Database Component

- Use a dedicated SAN
 - Dual Head (High Availability)
 - 5 – 500 GB SAS Drives
 - 4 set up in a RAID 5 configuration
 - 1 set up as a hot spare
- 2 physical host servers connecting to the SAN, each consisting of:
 - 2 – Hex-core processors with hyper-threading enabled
 - 32 GB of RAM per server (20 GB allocated to SQL)
 - Windows 2008 Enterprise Server R2 SP1 (64 bit version)
 - SQL Server 2008 R2 Advanced / Enterprise
 - Using SAN as shared storage

200K Devices

