



ZENworks Reporting Install/Update and Configure Jaspersoft Studio

June 2023

Legal Notices

For information about legal notices, trademarks, disclaimers, warranties, export and other use restrictions, U.S. Government rights, patent policy, and FIPS compliance, see <http://www.microfocus.com/company/legal/>.

© 2008 - 2023 Open Text.

The only warranties for products and services of Open Text and its affiliates and licensors (“Open Text”) are as may be set forth in the express warranty statements accompanying such products and services. Nothing herein should be construed as constituting an additional warranty. Open Text shall not be liable for technical or editorial errors or omissions contained herein. The information contained herein is subject to change without notice.

Contents

About This Guide	5
1 Install/Update and Configure Jaspersoft Studio	7
1.1 Installing Jaspersoft Studio 8.2.0	7
1.2 Updating to Jaspersoft Studio 8.2.0	8
1.3 Connecting Jaspersoft Studio 8.2.0 to ZENworks Reporting	8

About This Guide

This *ZENworks Reporting Install/Update and Configure Jaspersoft Studio* helps you to install and configure ZENworks Reporting Appliance with Jaspersoft Studio.

Audience

This guide is intended for ZENworks Reporting administrators.

Feedback

We want to hear your comments and suggestions about this manual and the other documentation included with this product. Please use the User Comments feature at the bottom of each page of the online documentation.

Additional Documentation

ZENworks Reporting is supported by other documentation (in both PDF and HTML formats) that you can use to learn about and implement the product. For additional documentation, see the [ZENworks documentation site](#).

1 Install/Update and Configure Jaspersoft Studio

Jaspersoft Studio 8.2.0 is an Eclipse-based report designer for ZENworks Reporting. It is a full rewrite of iReport. Jaspersoft Studio allows you to create sophisticated layouts containing charts, images, sub-reports, crosstabs, and more. You can access your data through various sources including JDBC, TableModels, JavaBeans, XML, Hibernate, Big Data (such as Hive), CSV, XML, as well as custom sources. Then you can publish reports as PDF, RTF, XML, XLS, CSV, HTML, XHTML, text, DOCX, or Open Office.

IMPORTANT: Jaspersoft Studio 8.2.0 supports only Windows.

To install/upgrade Jaspersoft Studio 8.2.0 and connect to ZENworks Reporting, perform the following tasks:

- ◆ [Section 1.1, “Installing Jaspersoft Studio 8.2.0,” on page 7](#)
- ◆ [Section 1.2, “Updating to Jaspersoft Studio 8.2.0,” on page 8](#)
- ◆ [Section 1.3, “Connecting Jaspersoft Studio 8.2.0 to ZENworks Reporting,” on page 8](#)

1.1 Installing Jaspersoft Studio 8.2.0

To install Jaspersoft Studio 8.2.0:

- 1 Download the `Jaspersoft_Studio_<version>.iso` file from the [Micro Focus Download](#) site.
- 2 Mount the `Jaspersoft_Studio_<version>.iso` file.
- 3 Browse to the `Jaspersoft_Studio_<version>.iso` directory.
- 4 Double-click the `setup.exe` file.
- 5 Select the required language, then click **Continue**.
- 6 Accept the agreement in the License Agreement page, then click **Next**.
- 7 Choose the installation directory, then click **Next**.
- 8 Review the Summary page. To change previous settings, click **Previous**; otherwise, click **Install**, then click **Done**.
- 9 Go to **Start > Jaspersoft > Jaspersoft Studio Professional-<version>**, then click **Jaspersoft Studio Professional-<version>**.
- 10 If the Workspace Selection page appears, specify the **Workspace Root Path**, then click **OK**.
- 11 If you want to create the workspace directory, click **OK**.
- 12 In Jaspersoft Studio, choose **Help**, then click **License Manager**.
- 13 In the License Manager page, click **Install new license**.

- 14 Browse to the `jasperserver.license` file location. License file location: `<js-studio installation directory>/js-studio-pro-<version>/jasperserver.license`
- 15 Click **Open** to install the new license for Jaspersoft Studio.
In the License Manager page, the **License Type** will be changed from **Evaluation** to **Commercial**.
- 16 Click **Close** to close the License Manager page.

NOTE: Installation of Jaspersoft Studio is supported only on 64-bit devices.

1.2 Updating to Jaspersoft Studio 8.2.0

If you are currently on Jaspersoft Studio 7.3.1, you need to update to the latest version of Jaspersoft Studio (8.2.0).

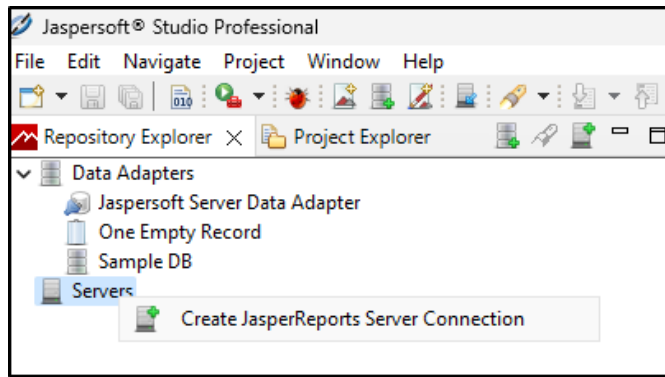
To update to Jaspersoft Studio 8.2.0:

- 1 Download the `Jaspersoft_Studio_<version>.iso` file from the [Micro Focus Download](#) site.
- 2 Mount the `Jaspersoft_Studio_<version>.iso` file.
- 3 Browse to the `Jaspersoft_Studio_<version>.iso` directory.
- 4 Double-click the `setup.exe` file.
- 5 Select the required language, then click **Continue**.
- 6 Accept the agreement in the License Agreement page, then click **Next**.
- 7 Choose the installation directory, then click **Next**.
- 8 Review the Summary page. To change previous settings, click **Previous**; otherwise, click **Install**, then click **Done**.
- 9 Go to **Start > Jaspersoft > Jaspersoft Studio Professional-<version>**, then click **Jaspersoft Studio Professional-<version>**.
- 10 Update your workspace to Jaspersoft Studio 8.2.0.
For information on updating your workspaces, see *1.2.5 Updating Your Workspace* section in the [Jaspersoft Studio 8.2.0](#) guide.

1.3 Connecting Jaspersoft Studio 8.2.0 to ZENworks Reporting

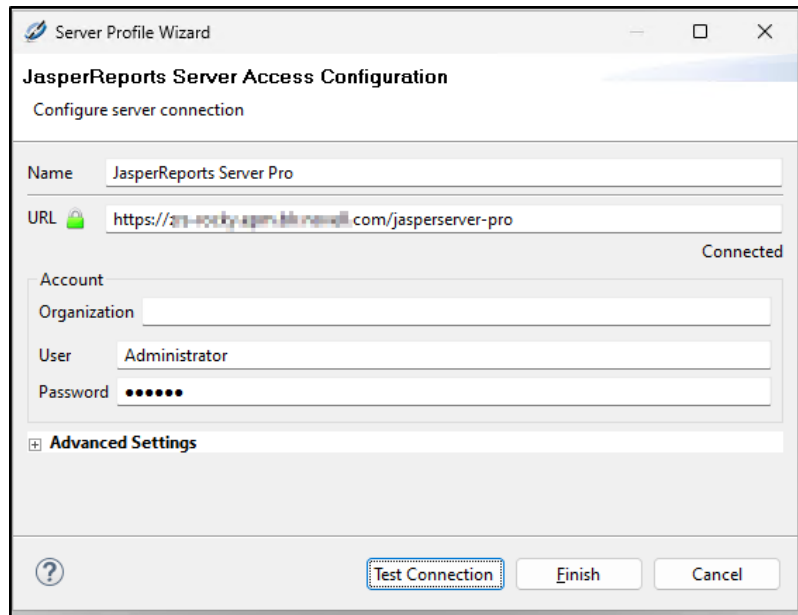
To connect Jaspersoft Studio 8.2.0 to ZENworks Reporting:

- 1 Start Jaspersoft Studio `<version>`.
- 2 In Jaspersoft Studio `<version>`, choose **Window > Show View**, then click **Other**.
- 3 In the Show View page, below the **Jaspersoft Studio** view, select **Repository Explorer**, then click **Open**.
- 4 In the Repository view, right-click **Servers**, then click **Create JasperReports Server Connection**.



5 In the Server profile wizard, specify the following:

- ◆ **Name:** Name of the connection.
- ◆ **URL:** The ZENworks Reporting URL (`https://<hostname>/jasperserver-pro/`). Do not use the ZENworks Reporting server IP address.
- ◆ **Organization:** Name of the organization.
- ◆ **User:** A valid ZENworks Reporting user name.
- ◆ **Password:** The relevant password for the user name specified in the previous field.



6 Click **Test Connection**.

Click **Trust** to accept the reporting server certificate. Connection to ZENworks Reporting server is established.

After a successful connection is established, the ZENworks Reporting content appears.

7 Click **Finish** to save the connection.

For more information about how to use Jaspersoft Studio 8.2.0, see [Jaspersoft Studio 8.2.0](#).

